

An abstract painting with a textured surface, featuring a palette of deep blues, muted greens, and earthy yellows. The brushstrokes are visible, creating a sense of movement and depth. The overall composition is non-representational, focusing on color and form.

**Blue Shop Gallery**

72 BRIXTON ROAD, OVAL

**Alice Neave**

# Lying Near Water

A SOLO EXHIBITION OF  
WORKS ON CANVAS & PAPER

5th - 22nd October 2023

[BlueShopCottage.com](http://BlueShopCottage.com) | [@blueshoppalleries](https://twitter.com/blueshoppalleries) | [hello@blueshopcottage.com](mailto:hello@blueshopcottage.com)

## Alice Neave

*Alice Neave (b. 1988) was born & educated in the UK. After growing up in rural Dorset, she completed a BA in Fine Art from the University of Leeds in 2010. This will be her third solo show but her first in five years, her last one was in 2018 with Public Gallery, London. Having spent some time living & painting in the Poitou Charente region of France, she now works from her studio in South East London on the Thames and completed the Turps Banana correspondence course in 2021.*

### Lying Near Water

'Lying Near Water' is an exploration of the experience of living in a city whilst needing the immersive respite of natural world encounters. Weaving together the landscapes of South-Eastern France and the mossy forests of Pembrokeshire, Neave embraces ambiguity in her landscapes, being intentional about mark-making and her choice of palette. By cutting up and sewing together fabric in paintings such as 'Window' and 'Honey from the Cat Woman', Neave illustrates the separation as well as the combining of fragmented experience. Cutting up whole paintings allows her to transform them into diptychs, creating a physical barrier that illustrates the disjointed access she has to the experience she seeks. Simultaneously, there is also a process of rebuilding as she stitches pieces together, creating new assemblages and assortments of memories.

Neave interweaves painting with textile, working directly onto unprimed calico. Reworking into the fibre with repetitive washes of raw-pigment, each mark reveals ghosts of old marks, exploring the concept of slowness and temporality. Equating process with outcome, Neave is interested in the idea of gain and loss as these marks appear and disappear, fluctuating. She cites tantric paintings and Persian miniatures as a reference for this method of making.

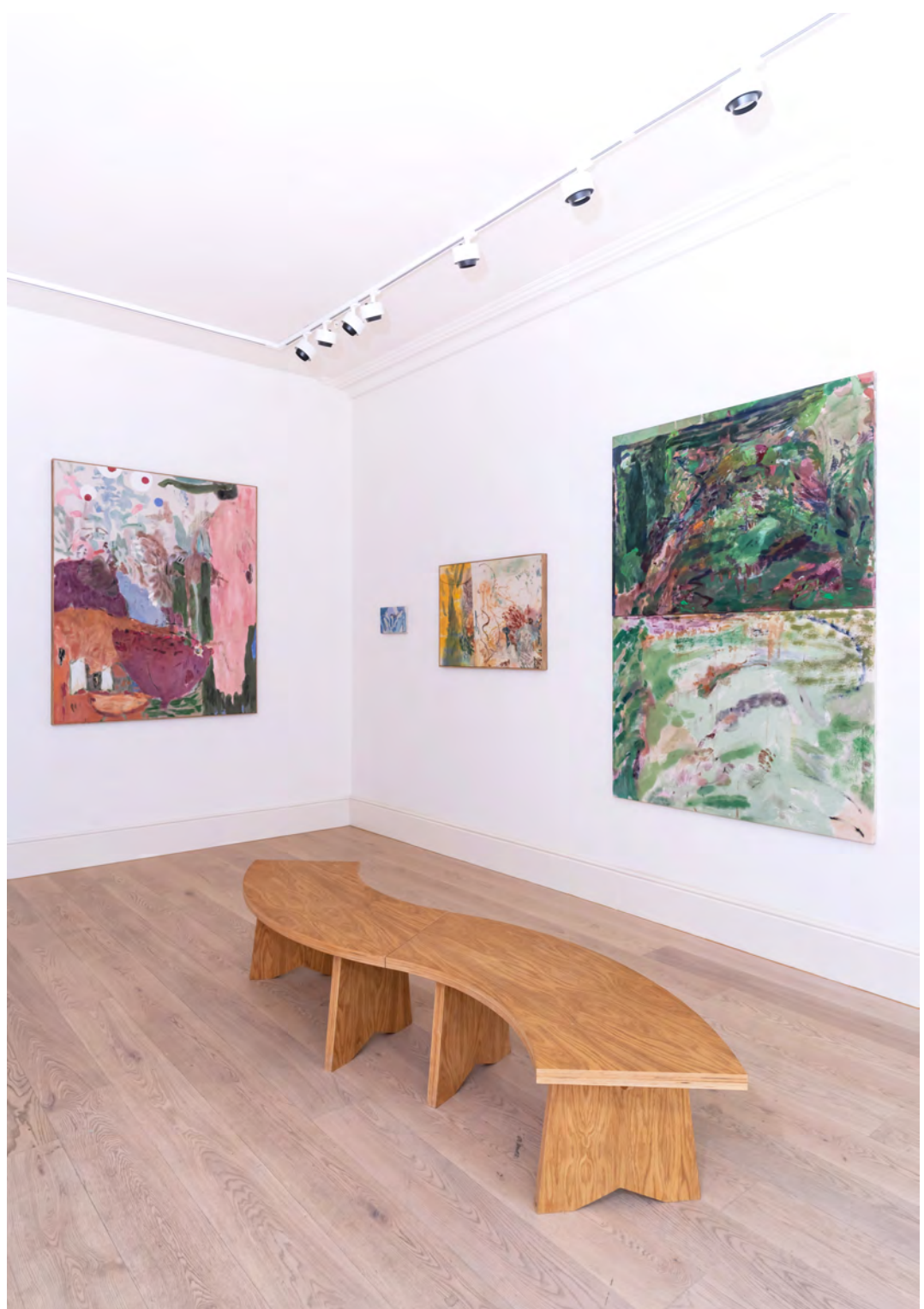
Neave's works are interlaced with memory and grief, as she cites her preoccupation with place and limbo. Believing that 'painting is a language to get to the crux of the matter', she uses the medium as a way to recreate familiar, uncanny environments that linger with the presence and absence of human life.

She frequently revisits Helen Frankenthalers' Mountains and Sea (1952) with its washes of colour and raw pigments seeping in. The exhibition title, 'Lying Near Water' comes from a painting that has set the tone for her ongoing practice with these processes and materials.

## Blue Shop Gallery

72 BRIXTON ROAD, OVAL









1. 'Hidden creatures'  
2023  
Oil & watercolour on calico  
72.5 x 77.5cm - framed size  
Framed in sapele  
SOLD



2. 'Lying near water 2023'

2023

Watercolour, acrylic & thread on linen & calico

122 x 137cm

£6,000



3. 'Out of a Skip'  
2023  
Mixed media collage  
37.5 x 58.5cm - framed size  
Framed in maple  
£850



4. 'Birdwatching II'

2023

Raw pigment on paper

39.5 x 32.5cm - framed size

Framed in maple

SOLD







5. 'To wake, or sleep?'

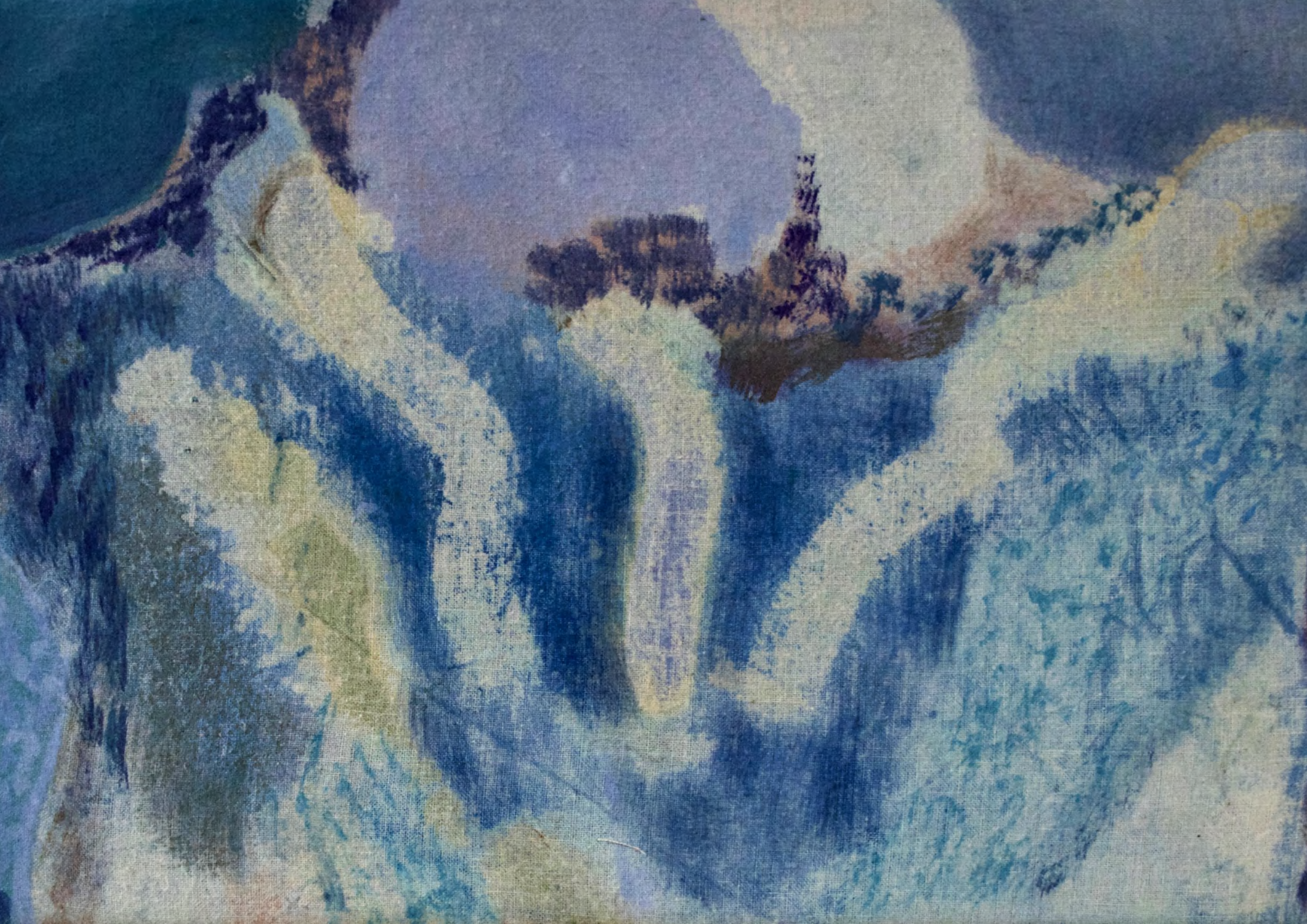
2023

Raw pigment & watercolour on calico

140 x 170cm

Framed in artist frame

SOLD





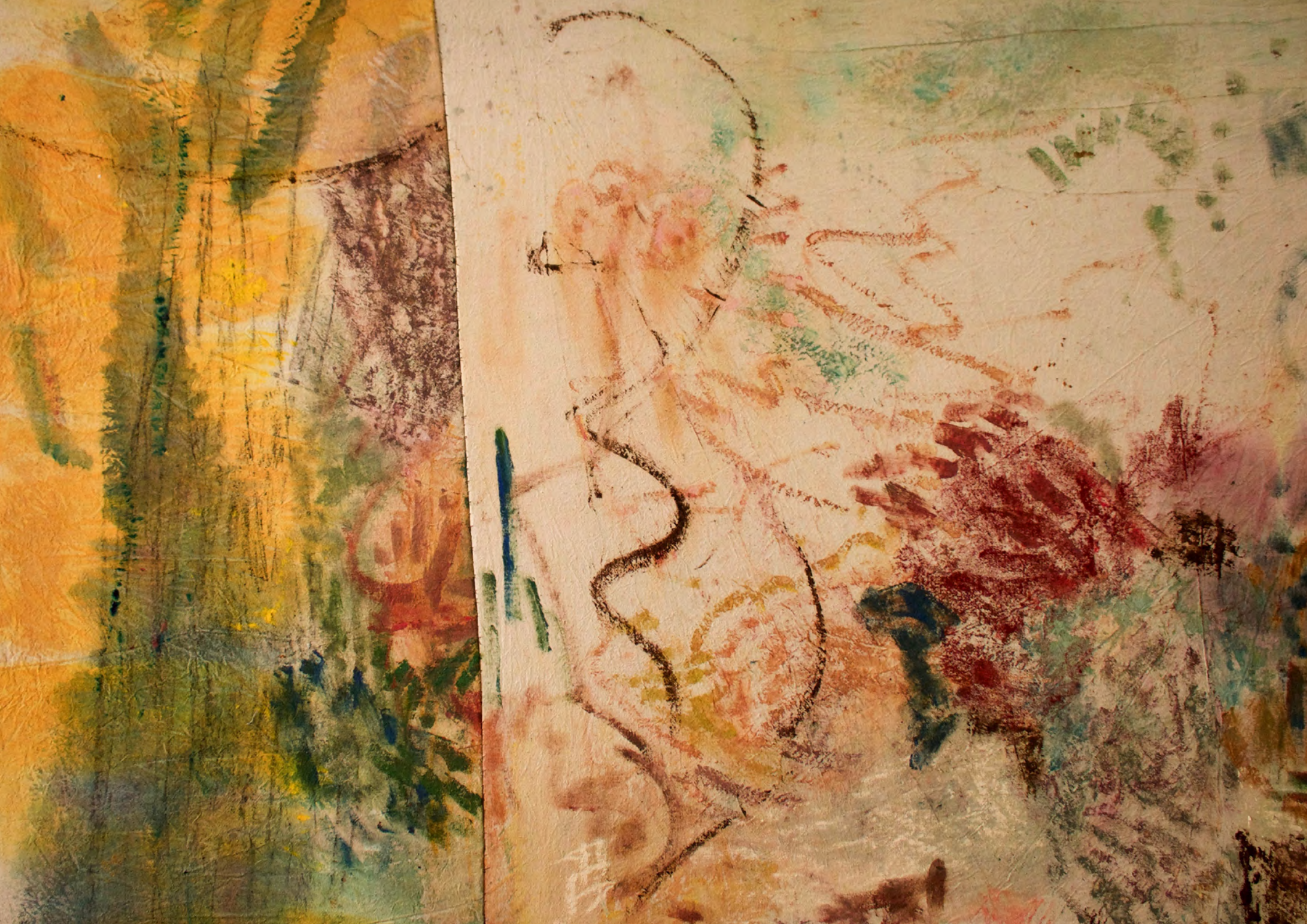
6. 'Sow'

2022

Raw pigment & watercolour on calico

30 x 20cm

SOLD





7. 'Honey from the Cat Woman'

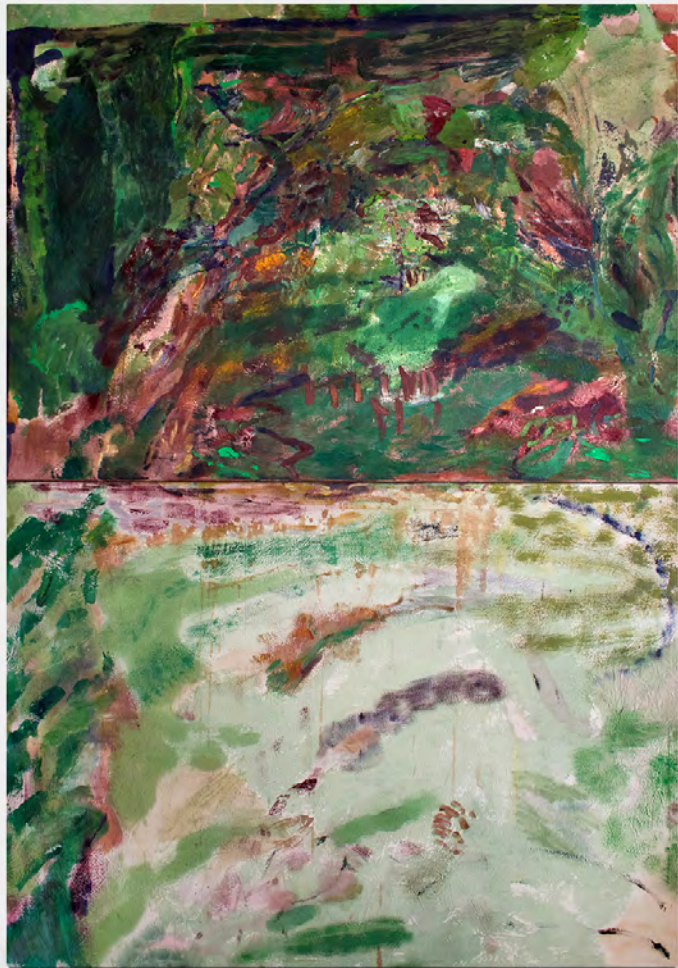
2023

Watercolour, Acrylic & thread on Calico

100 x 70cm

Framed in artist frame

SOLD



8. 'Hovel Living'

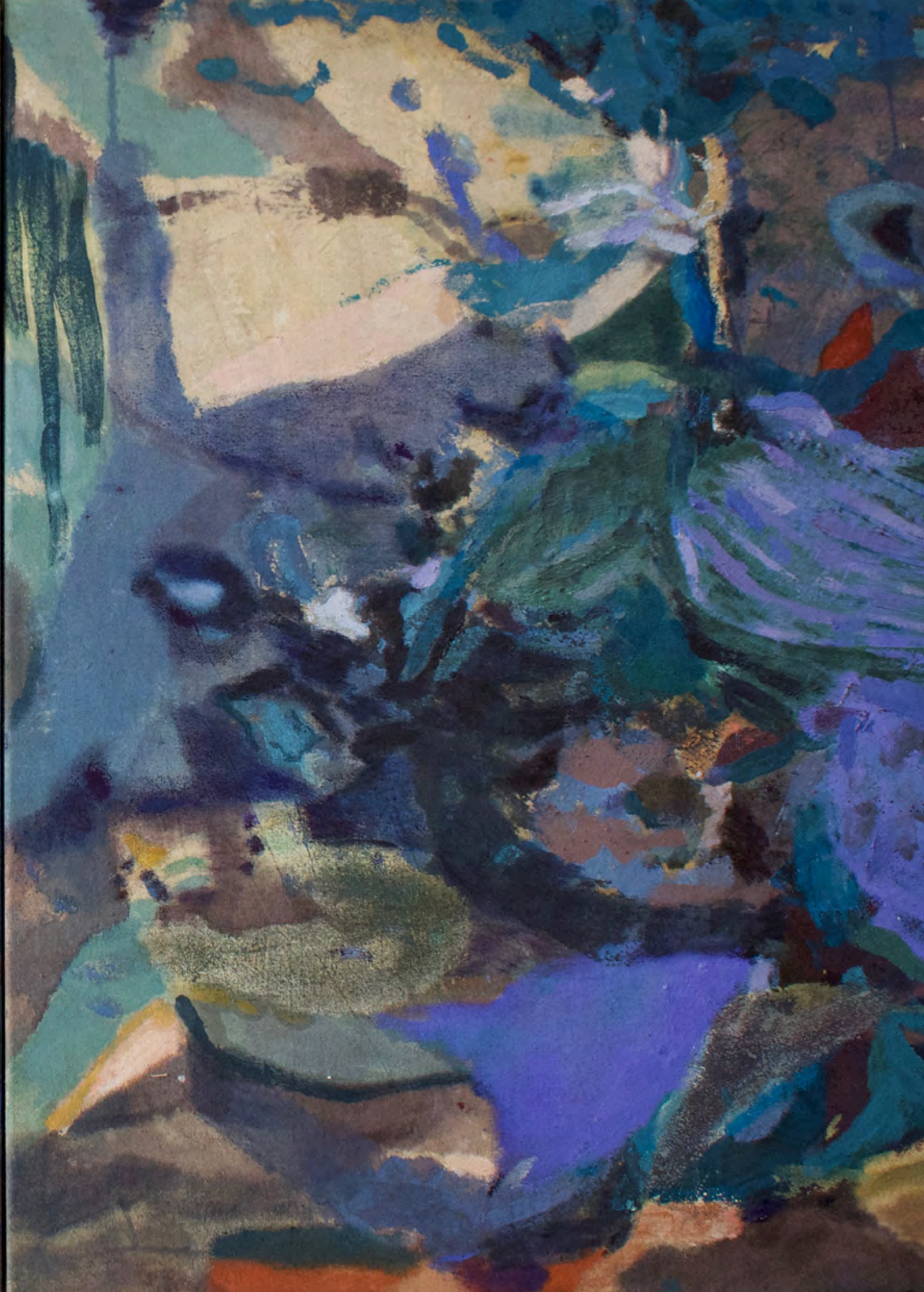
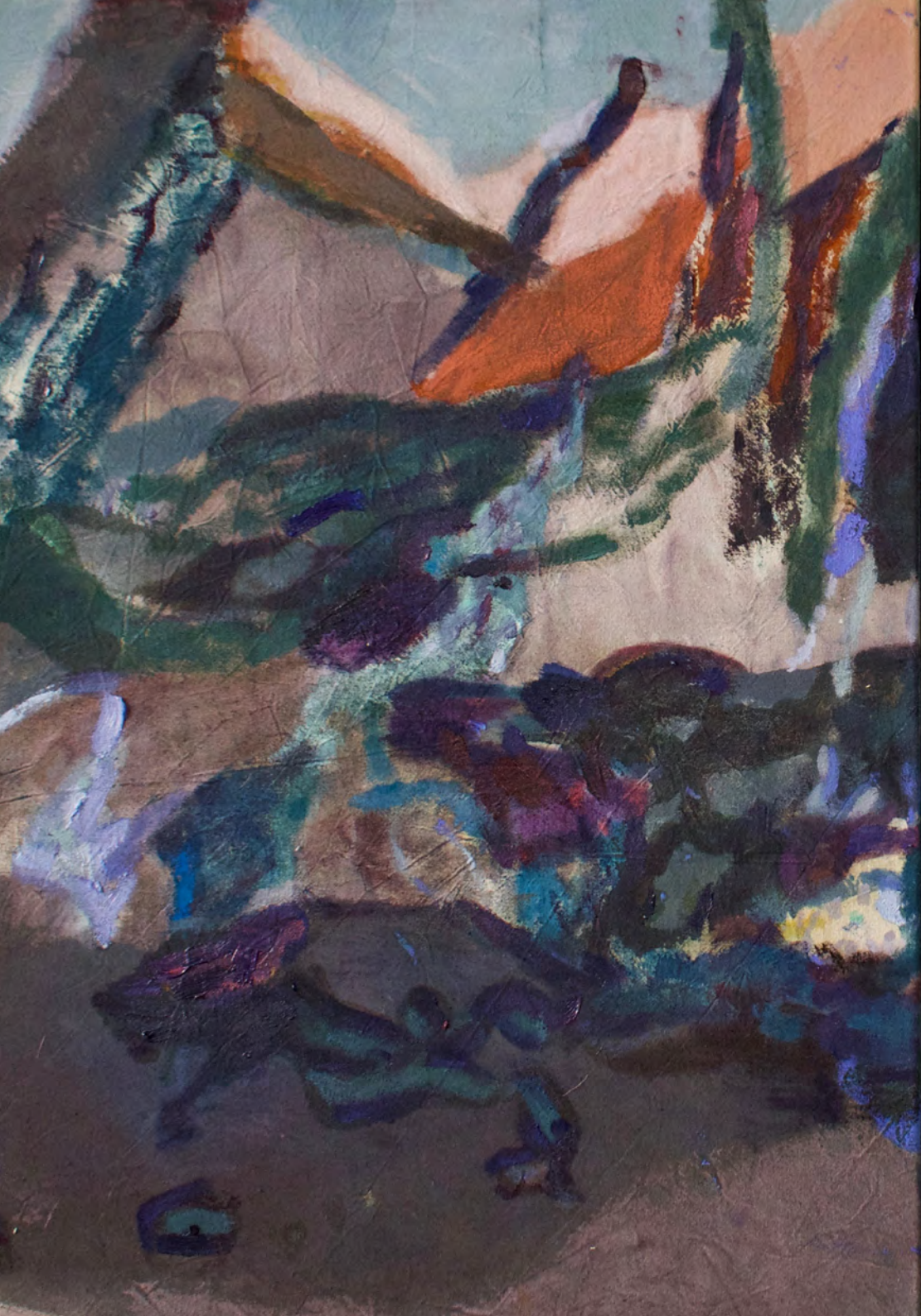
2023

Diptych

Raw pigment & oil on calico

200 x 140cm

£7,500







9. 'Dawnflood'

2022

Diptych, oil & watercolour on calico

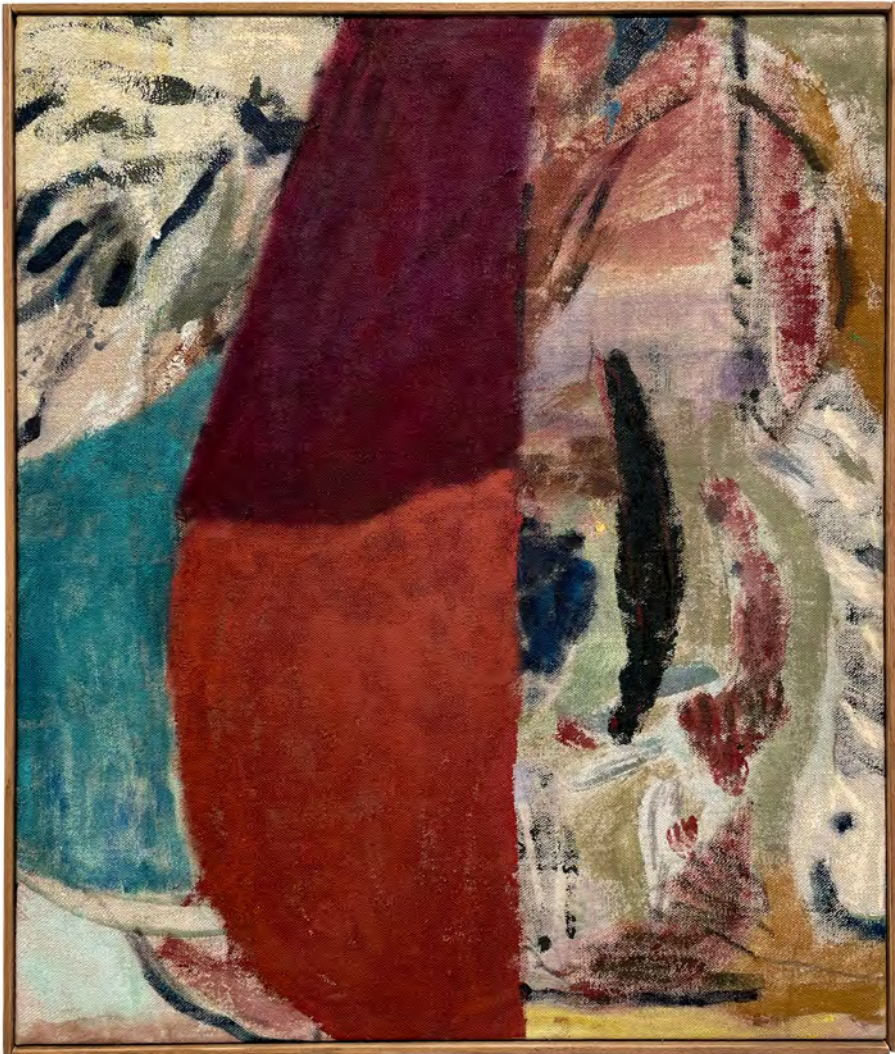
61 x 103cm

Framed in artist frame

SOLD



10. 'Two'  
2022  
Raw pigment on calico  
30 x 40cm  
SOLD



11. 'Messenger'  
2023  
Oil on linen  
60 x 70cm  
Framed in artist frame  
SOLD



12. 'Toast'

2022

Raw pigment & oil on paper

55 x 55cm

Framed in lime waxed ash

£1,000



13. 'Carningli 2023'  
2023  
Raw pigment on paper  
Framed in maple  
42 x 37cm  
Unavailable



14. 'Walking in June'  
2023  
Mixed media collage on paper  
Framed in maple  
44 x 48cm  
£850





15. 'Window'

2022

Raw pigment, oil & thread on calico

130 x 80cm

£3,500





16. 'Walk & Walk'  
2023  
Oil & raw pigment on paper  
Framed in maple  
50 x 58.5cm  
£1,000



17. 'Fell'

2023

Oil & raw pigment on paper

Framed in maple

49.5 x 43.5cm

SOLD



18. 'Lovers I'  
2020  
Monotype on paper  
Framed in Sapele  
38 x 47.5cm  
SOLD





19. 'House on the hill'  
2023  
Raw pigment & thread on calico  
190 x 150cm  
£6,000



20. 'Ponet'

2023

Raw pigment on paper

Framed in maple

40 x 32.5cm

£550



21. 'Father'  
2023  
Raw pigment & oil on calico  
30 x 50cm  
£850







22. 'Not now, but then'  
2023  
Raw pigment & oil on calico  
Framed in artist frame  
80 x 90cm  
SOLD



23. 'Dally'  
2023  
Raw pigment & binder on cotton  
51 x 81cm  
£1,900

## **Blue Shop Gallery**

72 BRIXTON ROAD, OVAL

If you would like to purchase any of the works by Alice Neave

please contact the team on [hello@blueshopcottage.com](mailto:hello@blueshopcottage.com)