

A close-up photograph of a hand with a gold ring on the ring finger, pointing towards the left. The hand is positioned over a large, abstract print in various shades of blue and white. The print features organic, flowing patterns. The background is a light, neutral color.

Blue Shop Cottage

ART GALLERY

ALICE HARTLEY
INES FERNANDEZ
DE CORDOVA
SOPHIA MCNAB
GREG STEVENS
JOE GAMBLE
SAMMI LYNCH

WOOLWICH CONTEMPORARY PRINT FAIR 2022

3-6 NOVEMBER 2022
WOOLWICH CONTEMPORARY PRINT FAIR
AT WOOLWICH WORKS

We are bringing 6 artists to Woolwich Contemporary Print Fair this year and they all bring an expressive painterly approach to print. Where print might seem static and typically be an edition of works, our body of work by our 6 artists shows the physical mark by the hand of the artist and all works are unique 1/1 artworks. There will be framed and unframed works to purchase from our stand. The fair runs 3-6 November 2022 at Woolwich Works and we can't wait to welcome you all there.

Woolwich Contemporary Print Fair – the UK's largest fair entirely devoted to contemporary prints – returns for its seventh edition! Bigger and better than ever before, WCPF brings together an incredible line-up of 1000 original artworks in a unique hybrid exhibition of emerging artists, famous names and specialist galleries. This year, the Fair is celebrating becoming reachable from Central London's Tottenham Court Road in just 15 mins, via the newly opened Elizabeth line.

Visitors will have the opportunity to peruse original prints from the most exciting artists working today at accessible price points, as well as take part in a thriving interactive programme of talks, workshops and live demonstrations from leading Curators, Collectors & Creatives.

Blue Shop Cottage
ART GALLERY



Woolwich
Contemporary
Print Fair.

OUR 6 BLUE SHOP ARTISTS AT WOOLWICH

ALICE HARTLEY

Hartley was born in 1988 in the South Downs where she grew up, she graduated from Kingston University in 2010 with a BA honours in Illustration and from the RCA in 2013 with an MA in Fine Art Printmaking, she has since been selected for New Contemporaries, had residencies in Canada, New York and Athens. Hartley lives and works in South East London and continues to exhibit around the UK, Europe and North America. Hartley set out in printmaking, making large scale woodcuts, her work referenced dreams, familiar landscapes and with fragments of her own text.

INES FERNANDEZ DE CORDOVA

Ines Fernandez de Cordova. Born 1992 in Bolivia. Lives and works in London, since 2011

Ines studied at Camberwell College of Arts for both her BA and MA. She graduated from her masters on Printmaking in 2017, continuing that path by working as a printer for Jealous Print Studios and Anita Klein to support her practice.

Ines Fernandez de Cordova is interested in the relationship between objects and time and the manner in which we perceive the two. Fernandez makes her sculptures from plaster or concrete to use them as tools to create still-lives, constructing subtle narratives through the use of sequence, mark making, overlapping and mirroring. Printmaking is a fundamental part of her practice and through the use of photography the artist has managed to cohesively merge her primary interests in sculpture and printmaking. Her work is cyclical in the sense that it continuously loops from 2D into 3D. Creating uncanny scenes with her sculptures, she aims to invite the viewer to analyse the relationships between them. A recurring theme in her work is the notion of balance which she explores through exploiting and emphasising the materiality of her sculptural creations.

SOPHIA MCNAB

Sophia McNab is an artist and printmaker based in Hastings, East Sussex, with an MA in Fine Art from City & Guilds of London Art School (2019-21).

Sophia's work draws on her family archive to explore memory, agency and our relationship to landscape. Works are presented as a space for remembrance with the passing of time registered through disintegration and concealment. Personal histories are explored through thoughtful material exploration.

After a sell out show with Blue Shop Cottage as part of Works on Paper 2022, Sophia has exhibited across the UK including with Warbling Collective and in a two person show at North Coast Asylum. This autumn she has works at the Phoenix Art Space Festival of Print and a collection with Blue Shop Cottage at the Woolwich Contemporary Print Fair. Sophia also works at the independent print house, Plaintiff Press.

GREG STEVENS

Gregory Stevens is an interdisciplinary artist working in printmaking. Currently living and working in London, he graduated from the Royal Drawing School in 2022 and Kingston School of Art 2019. His work attempts to capture a detritus of memory alongside the observed as it moves anarchically between the abstract and the figurative, he is interested in ordering the chaotic. From an animation background his pictures contain a kinetic sense of forms in movement, pulsating within an unstable choreography. The subject is drawn from a merging of observed imagery and a more imagined inner psychological landscape. Printmaking provides a further way to develop surface marks and create some element of chance. Attempting to avoid and subvert sterility, the fluidity of monotype helps to pursue an instinctiveness he feels is necessary for the anxiously intense, often violently colourful pictures he creates.

JOE GAMBLE

Joe Gamble lives and works in London. He graduated from The Drawing Year at the Royal Drawing School in 2019 and prior to that studied Graphic Communication at Bath School of Art & Design.

Working within the mediums of drawing and painting, Joe Gamble is intrigued by space, how it can be captured, interpreted and then finally presented. Drawing gives him the opportunity to experience a place over a period of time. An opportunity to record quickly the environment around him, finding contours and perspectives from within which to manipulate new forms. These preliminary drawings, alongside memory, act as a source material for his studio practice, foundations from which he works in painting and creates pieces that convey a sense of space.

Projecting further than one fixed location, he creates work from which the natural environment is a primary inspiration. Form and composition is taken from the landscape, while colour is drawn from his own experiences of light and weather. It is a process of constant evolution from which eventually produces an expanse in celebration of form, space, landscape, weather, light, shadow and colour. A place for the viewer to occupy, interpret and respond to.

Selected exhibitions include Weather Etc (A Joe Gamble Solo Show) at Bodney Road studios; organised with my friends Gedney Common, Best Of The Drawing Year at Christie's London and Innocent Pleasures Suit Me with Warbling Collective.

SAMMI LYNCH

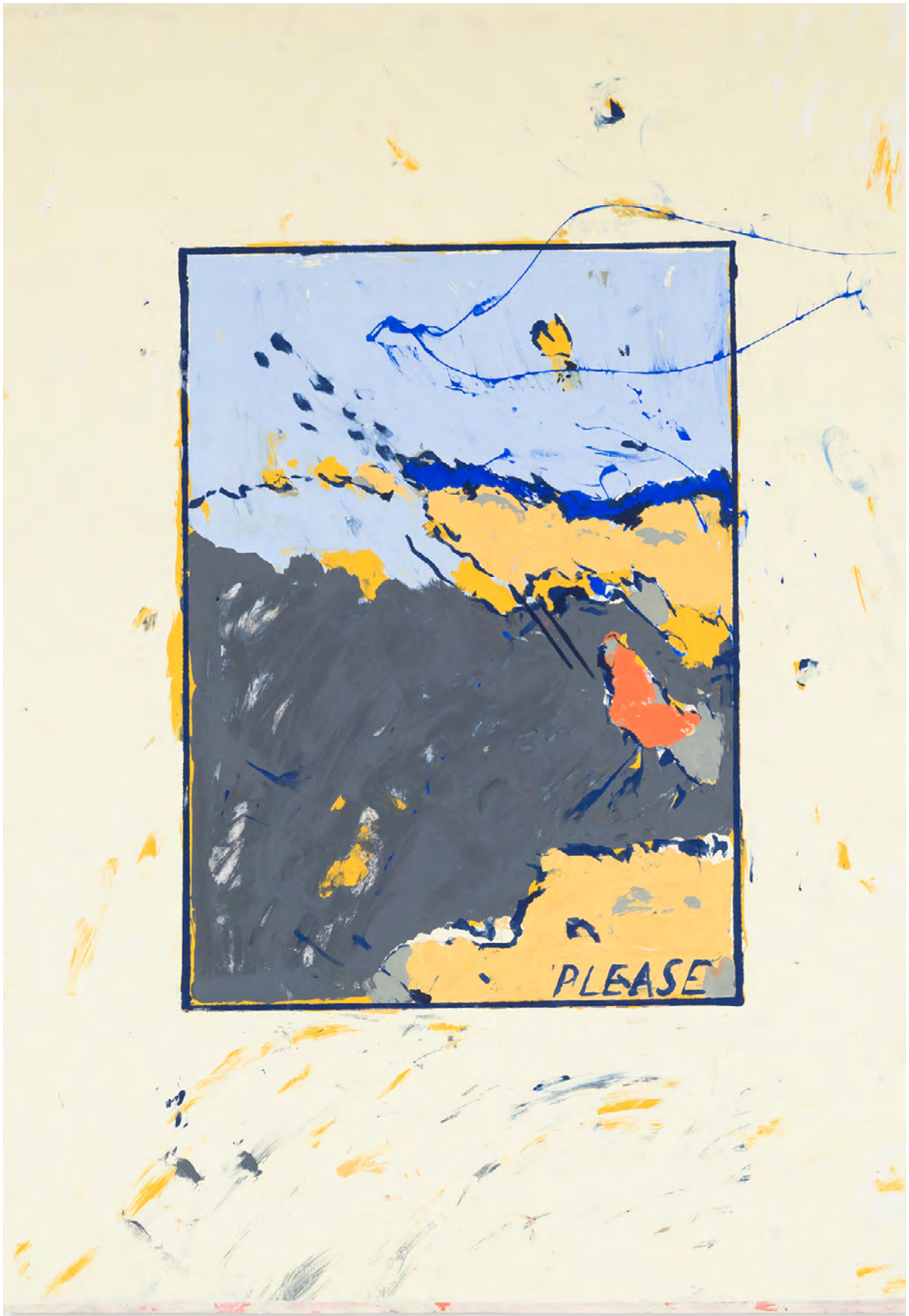
Sammi Lynch (b. 1995) creates works doused in earthy pastel smudges and silky-smooth textures, with the purpose of summoning a sense of place and memory inspired by internal and external landscapes. With oil paint or pastels, the London-based artist creates portals to vibrant, lyrical, moody places.

Lynch gives viewers an immersive window into a remembered or imagined worlds, often inspired by her time growing up in the North West of England. There is a sense of being set adrift and overwhelmed or comforted by nature, wandering through burnt orange or mint green skies, heavenly peach pink dunes and swaying grasslands. Lynch's paintings speak to the sublime and exalt the mundane.

We are bringing a beautiful painterly selection of works to Woolwich this year and can't wait to talk to so many of year about all the processes. Sammi uses Carborundum in her beautiful blue print which leaves a thick textured layer on the surface.



Alice Hartley in her South London studio



'Please Pt I'
2021

Alice Hartley

Mono screen print on archival paper mounted on aluminium
80cm x 114.5cm x 1.5cm

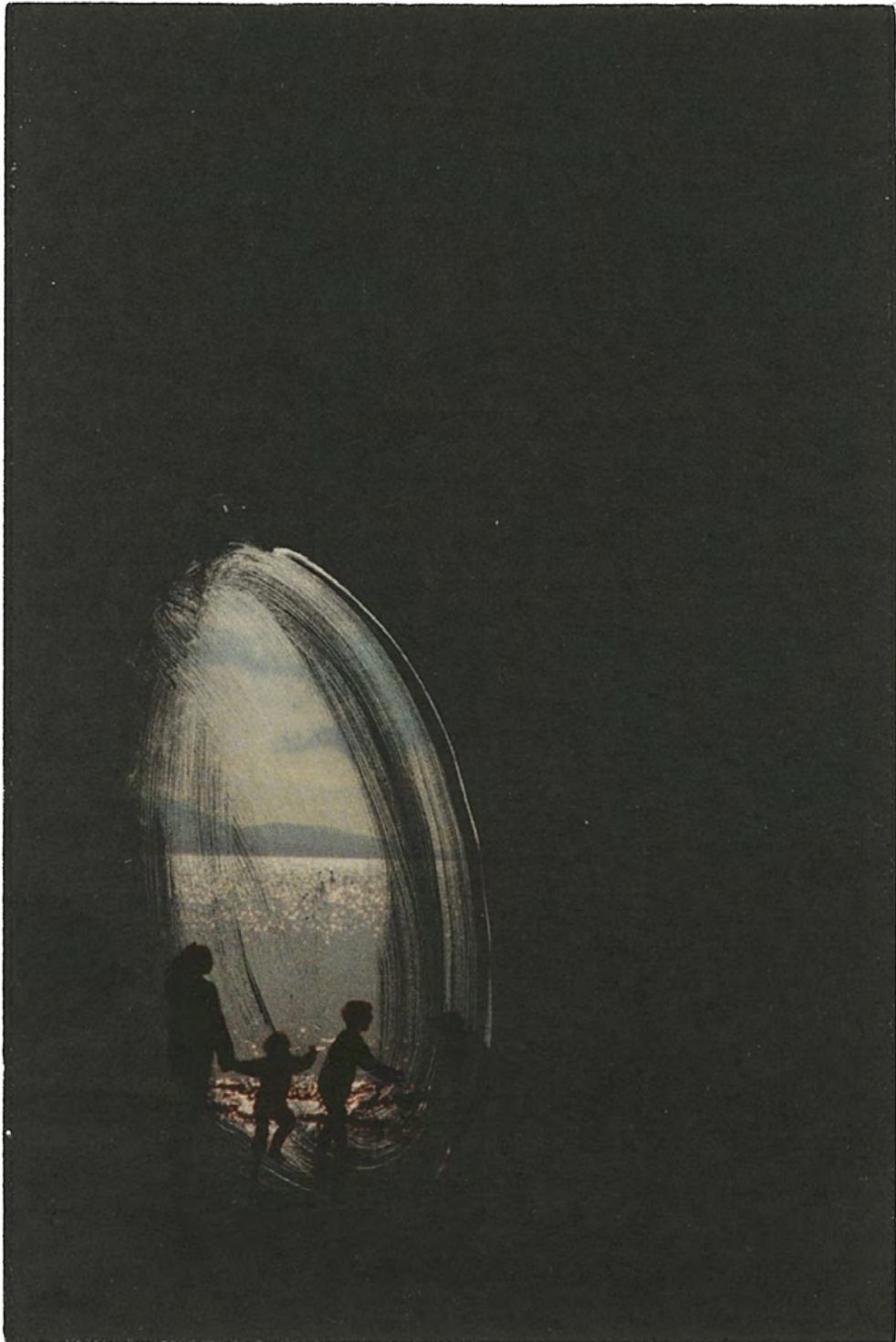


Ines Fernandez de Cordova in her South London studio

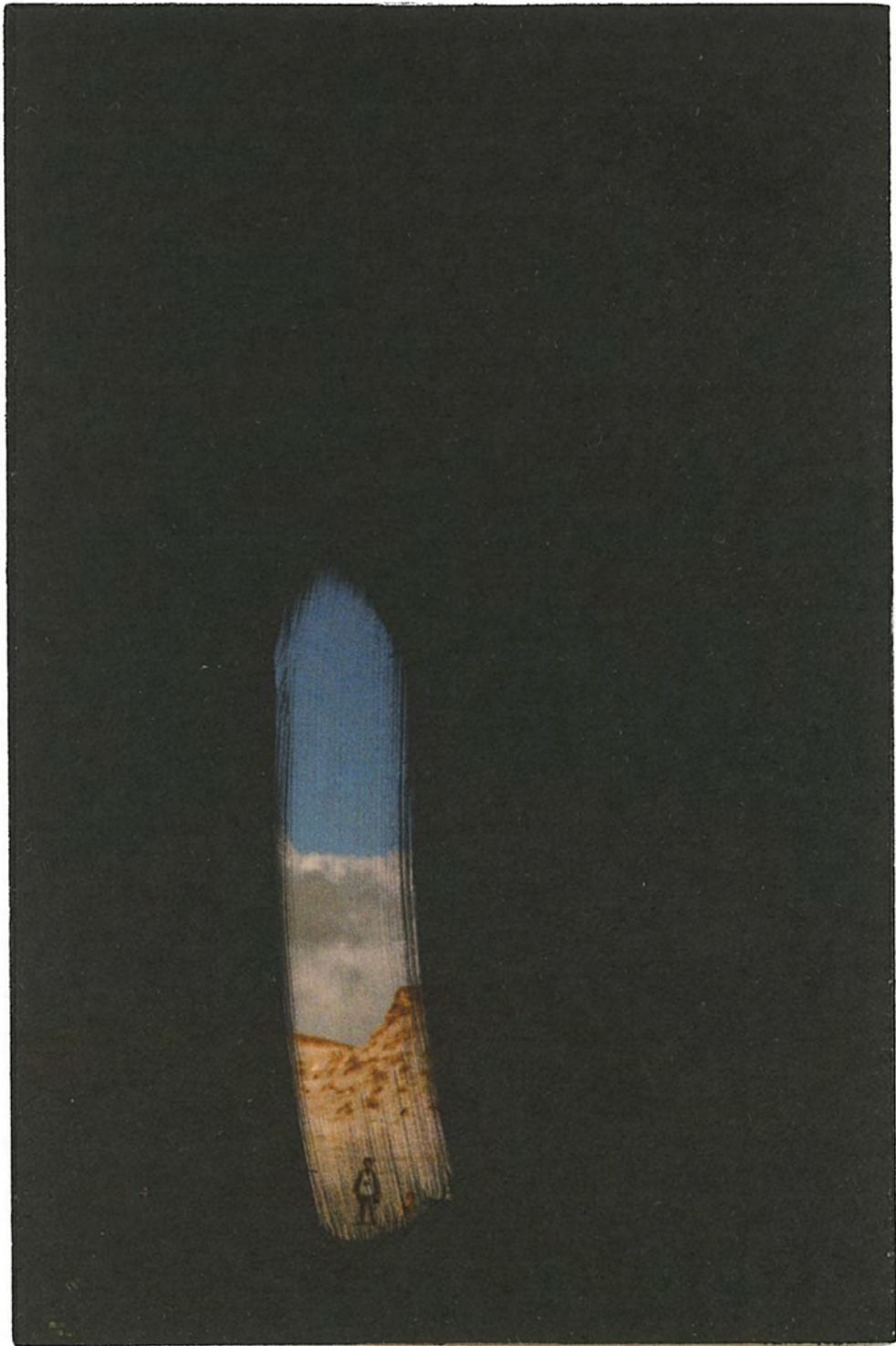




Sophia McNab in her South London studio



Work by Sophia McNab



Work by Sophia McNab



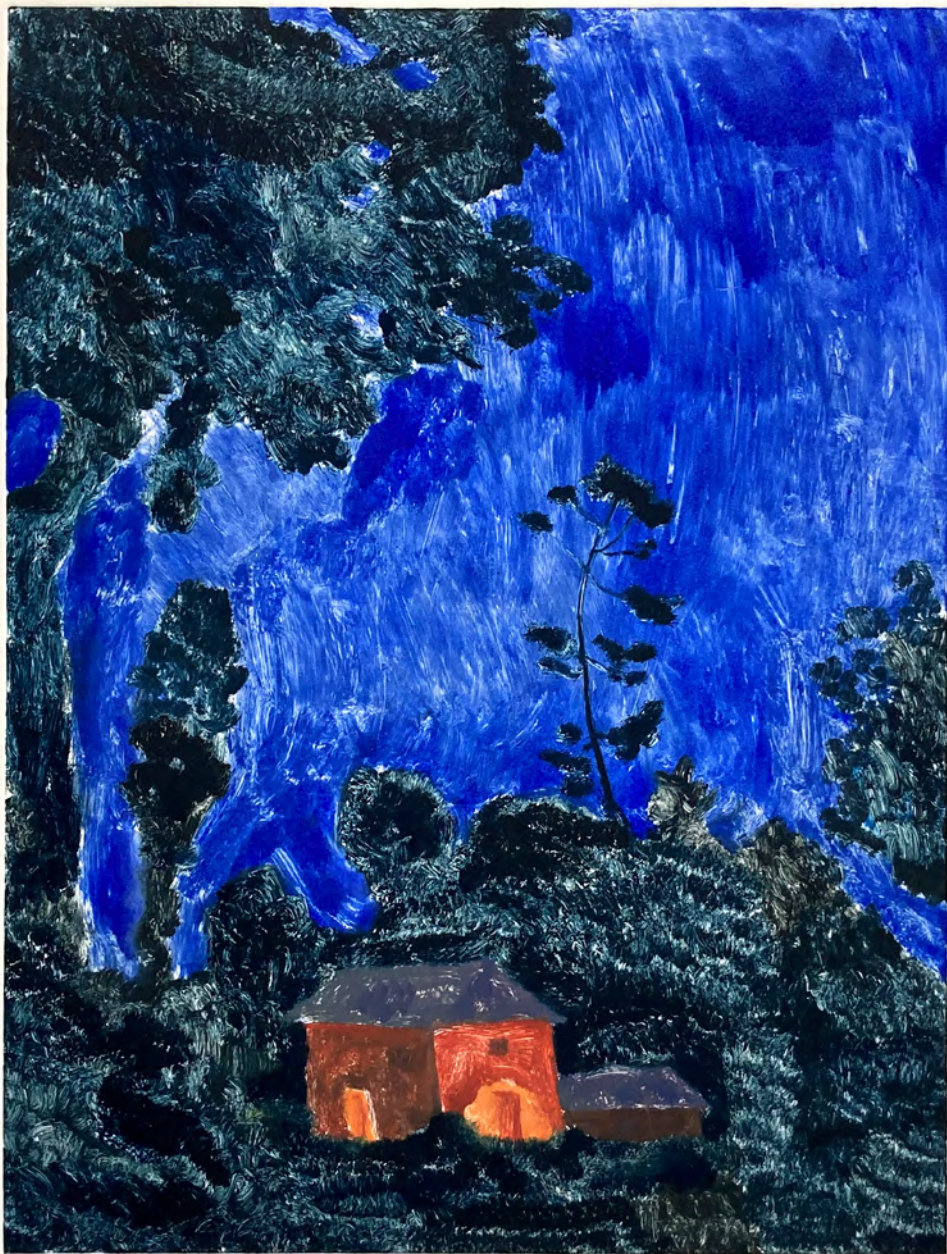
Work by Gregory Stevens



Work by Joe Gamble



Work by Joe Gamble



'Walking at Dusk'
Sammi Lynch
Monotype on Hahnemühle paper
53 x 69.5cm



'Deep Water'
Sammi Lynch
monotype on Hahnemühle paper
52 x 69cm



Blue Shop Cottage
ART GALLERY

For more information please contact the gallery on hello@blueshopcottage.com