



Blue Shop Gallery PRESENTS

CHARLIE BOOTHRIGHT  
9-16 FEB

# BOOTHRIGHT AND BOON

ARCHIE BOON  
18-26 FEB

9TH-26TH FEBRUARY 2023

Blue Shop Gallery

72 BRIXTON ROAD

@BLUESHOPCOTTAGE | BLUESHOPCOTTAGE.COM

Our second exhibition of 2023 brings together two solo shows back-to-back by a pair of young artists from Camberwell College of Arts. Charlie Boothright and Archie Boon are two incredibly exciting painters at the edge of their careers. For our show poster Oliver Wade, their close friend and fellow art student, captures their lives, artistic process and creative output in his numerous black and white film photographs. The paintings in this show are urgent, loud and passionate. Wade's documentary photographs echo both the physicality of Boothright and Boon's work, but also the energy and confidence of the pair as artists.

We first met them at Blue Shop Cottage in 2020 whilst they were in their first year of art school and now, three years later, we are proud to present their invigorating and energetic bodies of work on our brand new walls.

We have captured Boothright and Boon before the other powers at play affect the art, and the artist. Only the earliest bodies of artistic work retain the vitality of nascent artistic investigation and questioning. We are documenting the birth of brilliance, the birth of the painter.

Whilst there is a distinct conversation between the two bodies of works, they are separated by their approach to the canvas. Boothright's paintings force us into a primal, terrestrial world; we feel the child-like energy of fingers ripping through mud, trying to find form and magic in earth, but handled technically and compositionally with maturity way past her age. While Boothright searches for form by pushing paint around the canvas,

Boon's construction of form feels more considered, shapes and colour are suspended across the temporal planes of painting. If Boothright finds a tangible depth that reaches forward, towards us, Boon searches for a surrealist, metaphorical depth that sinks backwards into the wall.

By working predominantly in large scale abstraction, both artists are resisting the contemporary bombardment of images and constant stimulation of today. The works become an aesthetic antithesis to the oversaturated artificiality of now, but they also battle with our contemporary understanding of time. Painting, in particular abstraction, exists on some other plane of time. This bravery in battling against the expected is what gives their work its urgency, its ability to translate emotion to the canvas so immediately in a world where emotions are pictorially buried under layers of meaning and divergence.

When the end of the world looms over younger generations of artists, for what, or why, do we keep painting? There is no longer the necessity of painting to preserve, to document an understanding of humanity for later generations. There is only a feeling of construction for destruction. This anger and directness is what we are hanging on our walls. We are exalting what it means to be a painter born in the millennium.

People often ask us where and how we find our artists. Sometimes the answer is simple: they just walk through the door.

- Ocki Magill and Billy Parker of Blue Shop Galleries

**blueshopcottage.com**  
**@blueshopcottage**

# BOOTHRIGHT AND BOON

**Blue Shop Gallery**

72 BRIXTON ROAD, OVAL

INTRODUCING

# BOOTHRIGHT

9 - 16 FEB | 'JUST OUT OF REACH'

*Charlie Boothright (b. 2001) is an artist based in South London, who will graduate from Camberwell College of Arts, Fine Art Painting in 2023. She predominantly paints on large scale canvases that explore ideas of movement and dynamism through the tactility of materials.*

“Within my paintings I am constantly searching for more questions. I am engaged in a process involving myself as an artist and the materials that allow me to visualise my internal states through large scale abstract paintings. I believe an extension of the artist can be seen through the work they make, as personally I create as an outlet for expression. This body of paintings follow the past two years of investigating my identity as a painter.”

- Charlie Boothright, 2023







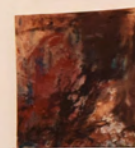
# BOOTHRIGHT

9 - 16 FEB | 'JUST OUT OF REACH'

**Blue Shop Gallery**

72 BRIXTON ROAD









Absent forest  
Charlie Boothright  
73 x 60cm  
Oil on canvas  
SOLD





Red Wash 2  
Charlie Boothright  
80 x 60cm  
Oil on canvas  
SOLD





Red Wash

Charlie Boothright

81 x 65cm

Oil on canvas

SOLD





Sienna Landscape

Charlie Boothright

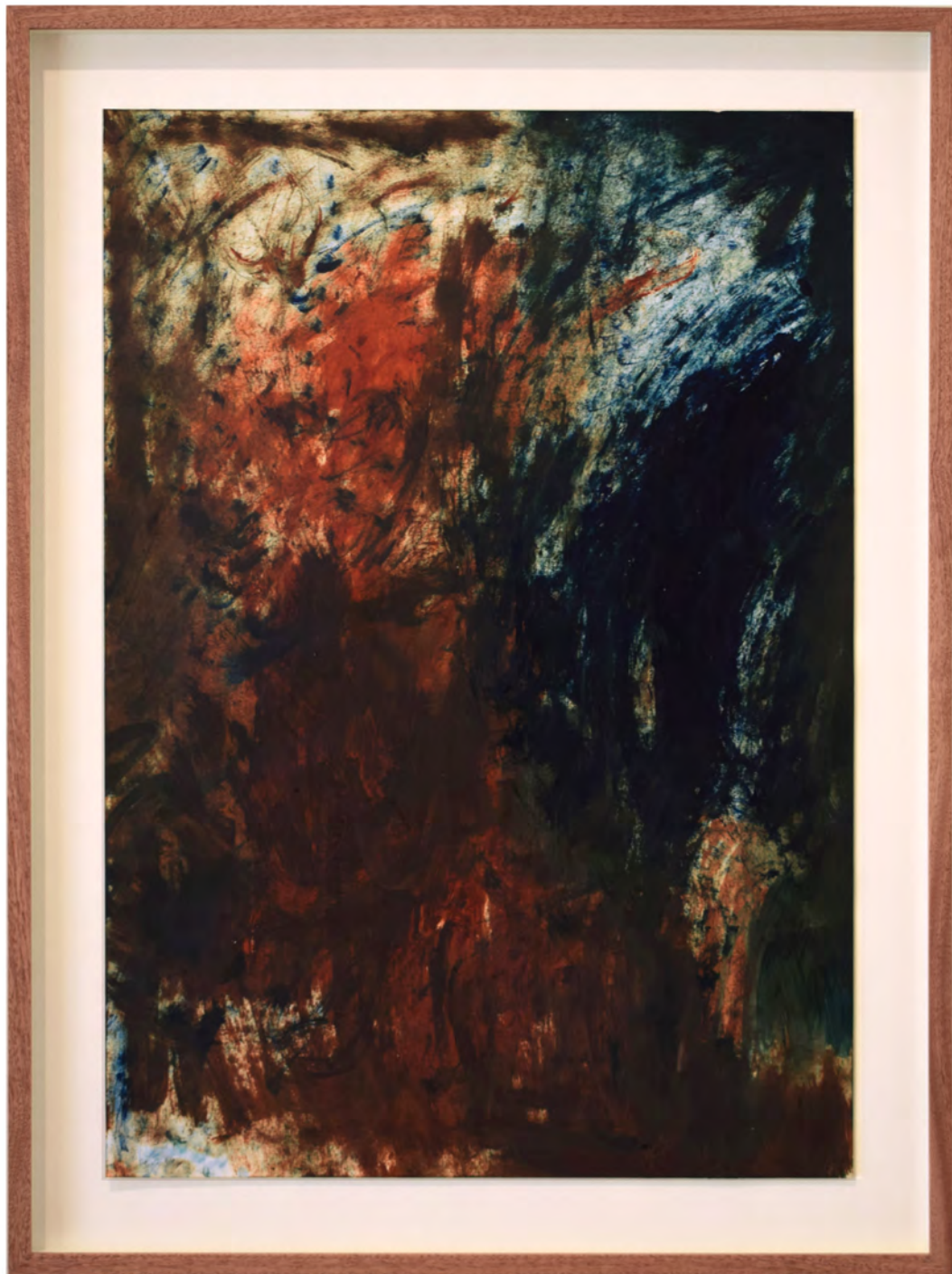
84 x 59cm - Artwork size

94.5 x 70cm - Framed size

Oil on two sheets of paper

Framed in sapele wood with anti-reflective glass

SOLD



**Wavering (paper)**

Charlie Boothright

58 x 41cm - Artwork size

70 x 52.5cm - Framed size

Oil on paper

Framed in sapele wood with anti-reflective glass

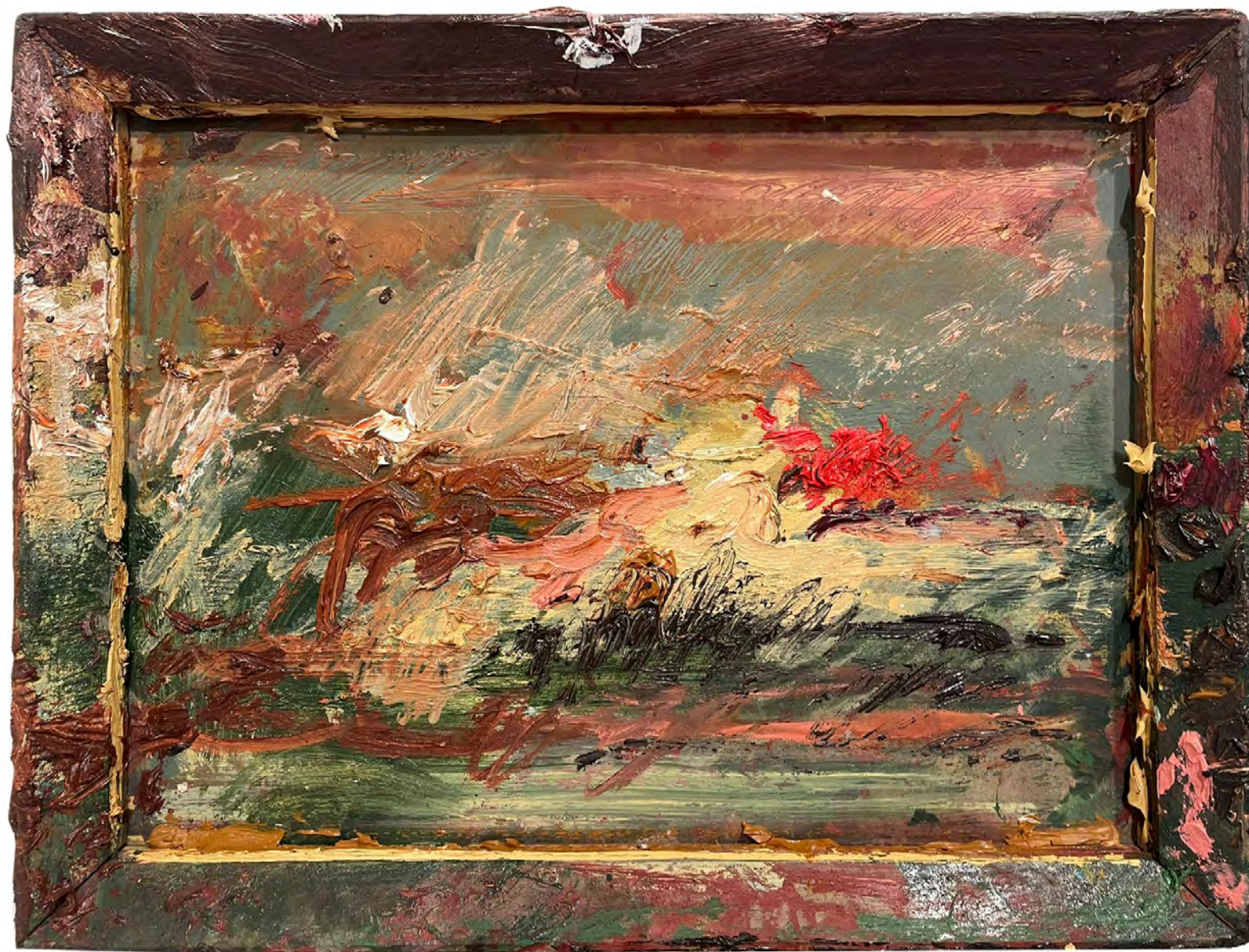
SOLD





Scoping  
Charlie Boothright  
Oil on canvas  
260 x 130 cm  
£5,000





Framed study  
Charlie Boothright  
41 x 31cm  
Oil on found frame  
SOLD





**Blue**

Charlie Boothright

Oil on canvas

150 x 200cm

£4,750



Diptych  
Charlie Boothright  
23 x 28cm each  
46 x 56cm  
Oil on canvas board  
SOLD





Bleeding

Charlie Boothright

Oil on canvas

180 x 150cm

£4,500





Wavering

Charlie Boothright

Oil on canvas

180 x 150cm

£4,500





Ode to Frankenthaler

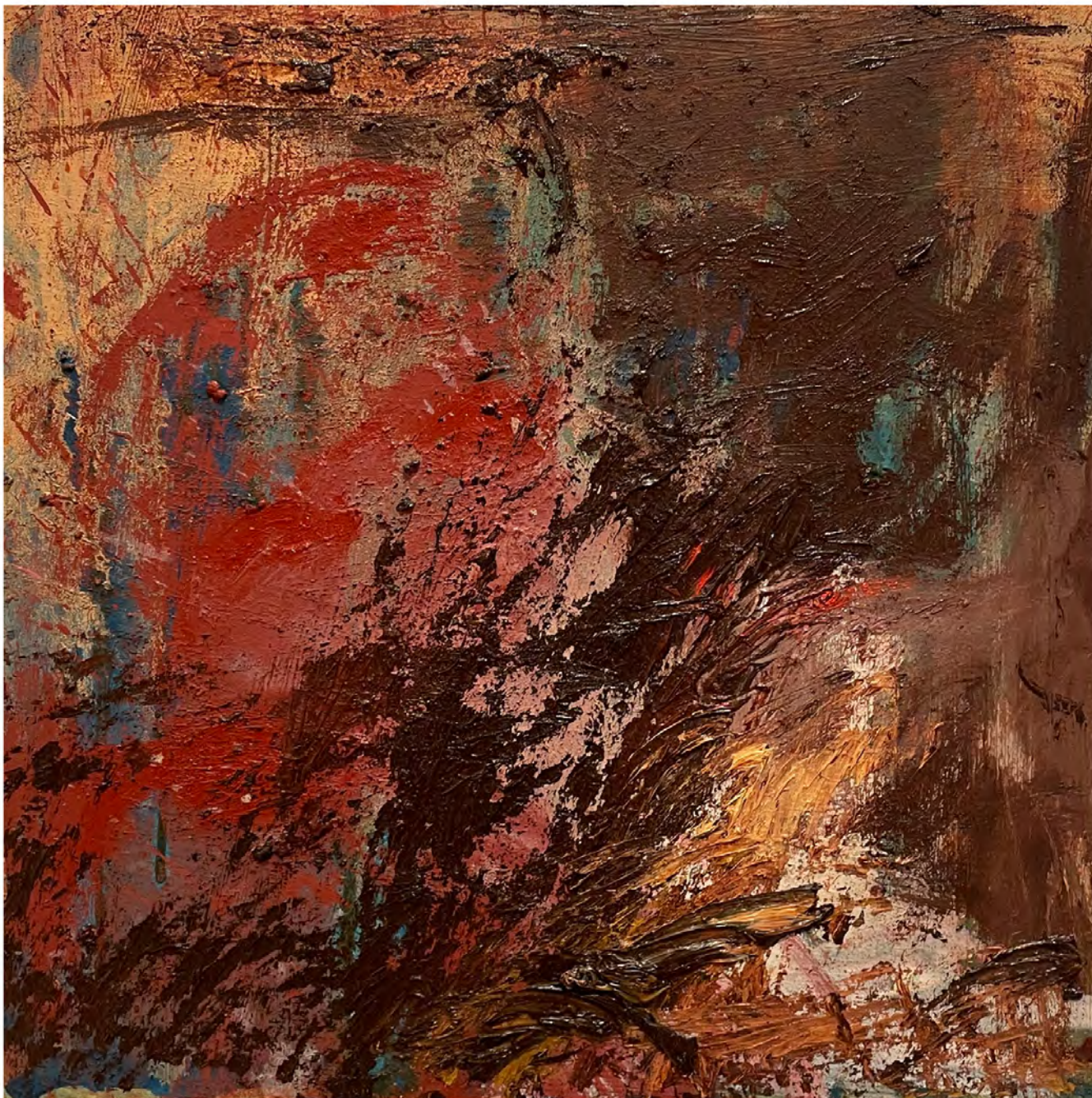
Charlie Boothright

Oil on wood

14 x 29cm

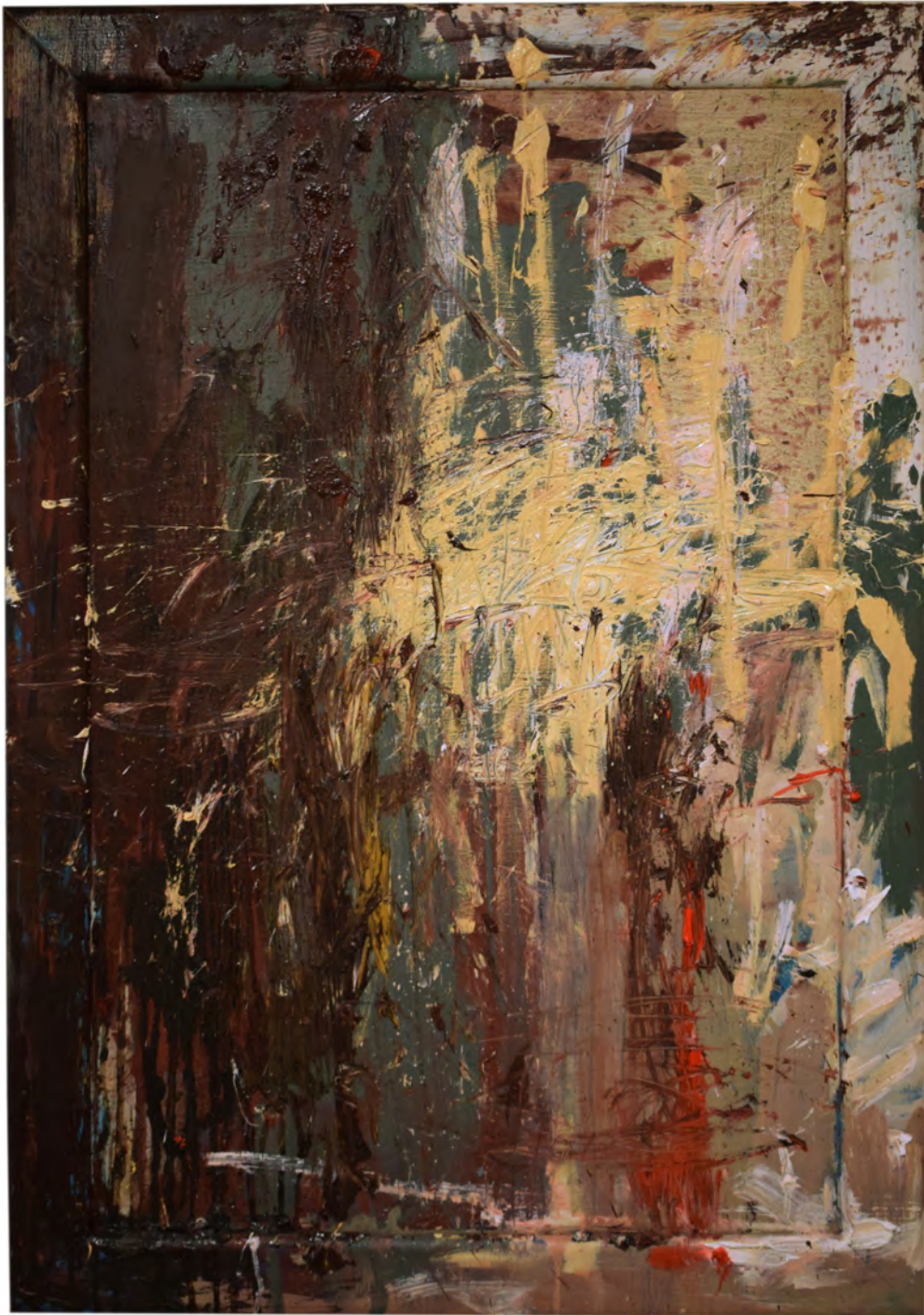
SOLD





Composition 1  
Charlie Boothright  
50 x 50cm  
Oil on canvas  
SOLD





Untitled

Charlie Boothright

73 x 104cm

Oil on wooden board and frame

SOLD





Grey Smith  
Charlie Boothright  
27 x 27cm  
Oil on canvas  
SOLD





Foraging

Charlie Boothright

Oil on canvas

180 x 160cm

£4,500





**Red scene 1**

Charlie Boothright

Oil on paper

59 x 42cm - Artwork size

70 x 52.5cm - Framed size

Framed in sapele wood with anti-reflective glass

SOLD





**Red scene 2**

Charlie Boothright

Oil on paper

59 x 42cm - Artwork size

70 x 52.5cm - Framed size

Framed in sapele wood with anti-reflective glass

SOLD





**Red scene 3**

Charlie Boothright

Oil on paper

59 x 42cm - Artwork size

70 x 52.5cm - Framed size

Framed in sapele wood with anti-reflective glass

SOLD





**Engraved relief**

Charlie Boothright

Oil on paper

21 x 15cm - Artwork size

36 x 29.5cm - Framed size

Framed in sapele wood with anti-reflective glass

SOLD





**Blue Mass 1, 2, 3**

Charlie Boothright

Oil on paper

42 x 59cm - Artwork size

52.5 x 70cm - Framed size

Framed in sapele wood with anti-reflective glass

£850 each | £2,400 for Triptych





Landscape of Solace

Charlie Boothright

60 x 42cm

Oil on wood

SOLD





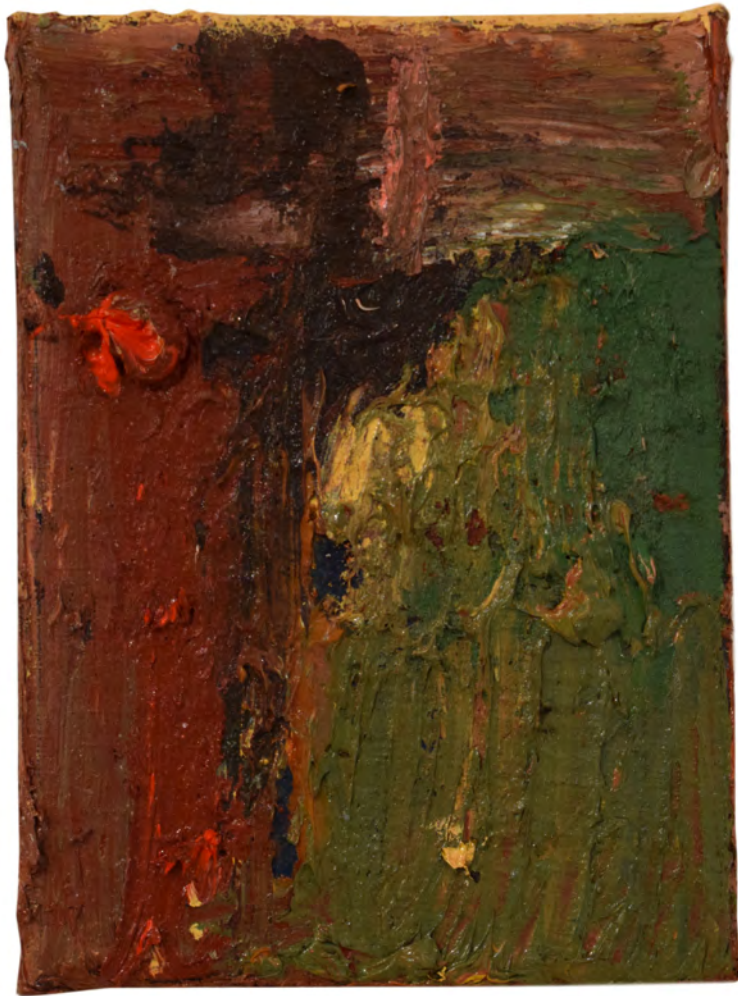
Colour Lineage 1  
Charlie Boothright  
13 x 18cm  
Oil on canvas  
£375





Colour Lineage 2  
Charlie Boothright  
13 x 18cm  
Oil on canvas  
SOLD





Colour Lineage 3  
Charlie Boothright  
13 x 18cm  
Oil on canvas  
£375





Colour Lineage 4  
Charlie Boothright  
13 x 18cm  
Oil on canvas  
SOLD



INTRODUCING

# BOON

18 - 26 FEB | 'PURGE'

*Archie Boon (b. 2000) is an artist currently based in South London, and studies Fine Art Painting at Camberwell College of Arts. Having grown up in the town of Saffron Walden whose pastoral and bucolic environs have provided the inspiration for many of his paintings, Boon closely abstracts the natural landscape with an increasingly muted colour palette and dynamism in his brush strokes.*

“My current body of work has seen a massive reduction in colour and representational forms and has in turn become an outlet for recording feelings responding to a period or place. My works aim to show a trace of humanity, and act as evidence of time/ work/process that has been rendered onto canvas. The work has become more introspective; getting information down onto the surface of the painting through large amounts of paint carving out the surface of my thoughts. This body of work has been made in response to my last show “Windmill Hill”.

- Archie Boon, 2023







# BOON

18 - 28 FEB | 'PURGE'

Blue Shop Gallery

72 BRIXTON ROAD









Purge (small)

Archie Boon

Oil on canvas

94 x 73.5cm

Framed in walnut

SOLD





Bridge over water

Archie Boon

Oil on canvas

200 x 120cm

£5,000





**Scrambled**

Archie Boon

Oil on canvas

28.5 x 50cm

Framed in walnut

£1,750





Silverfish

Archie Boon

Oil on canvas with painted frame

35 x 64cm

£2,150





Dyslexic blue  
Archie Boon  
Oil on book hardback, diptych  
26.5 x 35.5cm each  
Framed in walnut  
SOLD









Purge  
Archie Boon  
Oil on canvas  
Triptych  
220 x 510cm  
POA





Freelander  
Archie Boon  
Oil on found frame  
29 x 33cm  
£1,550





Freeloader  
Archie Boon  
Oil on found frame  
29 x 33cm  
£1,550





**Hanging**

Archie Boon

Oil on canvas

25.5 x 33.5

Framed in walnut

£1,200





Stolen moment  
Archie Boon  
Oil on canvas  
25.5 x 33.5  
Framed in walnut  
SOLD





**Shelter**

Archie Boon

Oil on canvas

25.5 x 33.5

Framed in walnut

£1,200





You

Archie Boon

Oil on canvas

25.5 x 33.5

Framed in walnut

SOLD





More today than yesterday

Archie Boon

Oil on canvas

25.5 x 33.5

Framed in walnut

£1,200





Locomotion  
Archie Boon  
Oil on canvas  
25.5 x 33.5  
Framed in walnut  
£1,200





Night and day

Archie Boon

Oil on canvas

25.5 x 33.5

Framed in walnut

£1,200





Blue Lagoon  
Archie Boon  
Oil on canvas  
33.5 x 33.5cm  
Framed in walnut  
£1,500





Camberwell shelf  
Archie Boon  
Oil on canvas, diptych  
64 x 25.5cm  
Framed in walnut  
SOLD





Red Head  
Archie Boon  
Oil on canvas  
60 x 80cm  
£2,500





Tender  
Archie Boon  
Oil on canvas  
45 x 30 cm  
£1,600





Backscatter  
Archie Boon  
Oil on canvas  
200 x 130cm  
£5,000



## **Blue Shop Gallery**

72 BRIXTON ROAD

If you would like to purchase any of the works  
by Archie Boon or Charlie Boothright please  
contact the team on [hello@blueshopcottage.com](mailto:hello@blueshopcottage.com)

[UPDATED LIST OF WORKS](#)