



**Blue Shop Gallery**

72 BRIXTON ROAD

**KNITTED  
HEDGES**

**Connie Harrison**

6th - 23rd April 2023

@BLUESHOPCOTTAGE | BLUESHOPCOTTAGE.COM



# Connie Harrison

Connie Harrison (b.1993) lives and works in South London. She studied her BA at Chelsea College of Arts graduating in 2016 and has exhibited across London and beyond since. Blue Shop Gallery are proud to present 'Knitted Hedges', a predominantly South London inspired show, a celebration of the green spaces we love the most. 'Knitted Hedges' is a celebration of our very own local verdant parks and landscapes from Camberwell to Brixton, Brunswick to Brockwell.

Through surfaces and their variations, compositions manifest slowly, through a process of layering and stripping away oil paint and wax paste. In texture, mark, opacity and colour, elements of the surface unfold, overlay and entwine, stimulating movement and depth to the work, as if they are themselves growing. Natural forms and elements float across the depth of the painting plane, in and out of familiarity. The transfer of reality is not simply reduced to form, shape and colour, but is rich in energy and atmosphere. There is an entombing of time as well as place. Paint, very deep in some places and, in others more exposed, reveals earlier iterations of the painting below: representations coagulate like memories, emulating the idea of passing and fluctuating time, the past meets the present and influences its form, setting its course. A course which promotes pause and draws out our instinctual desires to touch and to be touched. Processes of removal, erosion and carving create uncertainties that introduce space for bodily encounters. Harrison's interest lies further than a viewer's visual or emotion engagement, but reaches further, teasing haptic responses.

The paintings grow organically, layer after layer, developing depositional patterns, mimicking decaying leaves and sedimentary rock: but then they are then carved into and the surface resculpted, an attempt to tame and counteract the organic process.

Whilst there are obvious references to nature, Harrison's processes, in particular her use of colour, give the work a sense of electrical vibration. Colours hover, entombed and knitted across layers of an opaque wax paste that remind me all at once of a delicate prehistoric mosquito trapped in amber and explosions of fireworks. The paint seems to breath and float like the leaves of trees in a brisk London wind, but also gyrate and twitch like a glitching screen.

In choosing to study London's parks and green spaces, Harrison is both documenting, and reminding us of how necessary and important green spaces have become in recent years. Their stagnancy as natural corridors and moments of respite has been dispelled as they have once again become vital social and meeting places. The documentation of our beloved parks including Brunswick Park, Folkstone Gardens, Brockwell Gardens, Kew Gardens, Ruskin Park, Hampstead Heath and Rookery Gardens provide painterly respites from the chaotic world around us, we are reminded of our outdoor spaces that have become extensions of our homes. Harrison's work provide us with a sense of safety much like London's mazes of hedges and shrubbery provide safety and shelter to the city's wildlife. The pathways carved into Harrison's paintings imitate the natural highways that slice through the concrete, formed by hedges and shrubbery that protect the berries, birds and beasts that take shelter within.

The body of work feels like a love letter to the green spaces that pepper south London, and the city at large. Spaces that maybe went unappreciated for many years are asking to be reconsidered and remoulded, much like Harrison's paintings request in their engagement. It is with growing importance that as humans, we continue to constantly reassess and reinvestigate our physical world. Harrison, through combining quiet attentiveness with consistent careful work forces us to investigate with her same level of intricacy, something as simple and beautiful as a natural London landscape. We are left with a sense of responsibility to investigate our own intimate physical experiences with as much fervor as Harrison.











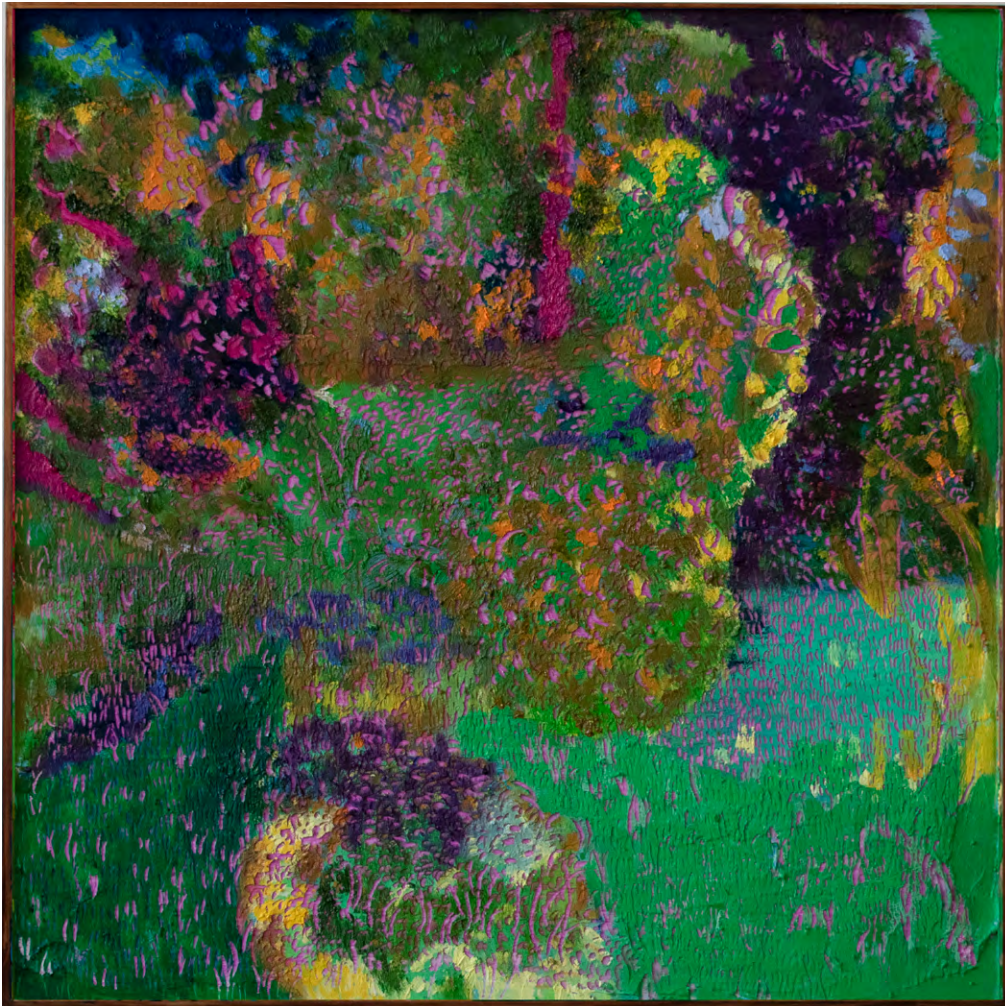
Brunswick Park  
80 x 80cm  
Oil paint and wax paste on framed board  
2023  
£3,950





Country Hedgerows  
120 x 120cm  
Oil paint and wax on board  
2023  
SOLD





Green Park  
40 x 40cm  
Oil paint and wax paste on framed board  
2023  
SOLD





Pleaching  
Diptych  
120 x 40cm  
Oil paint and wax on board  
2023  
£3,800





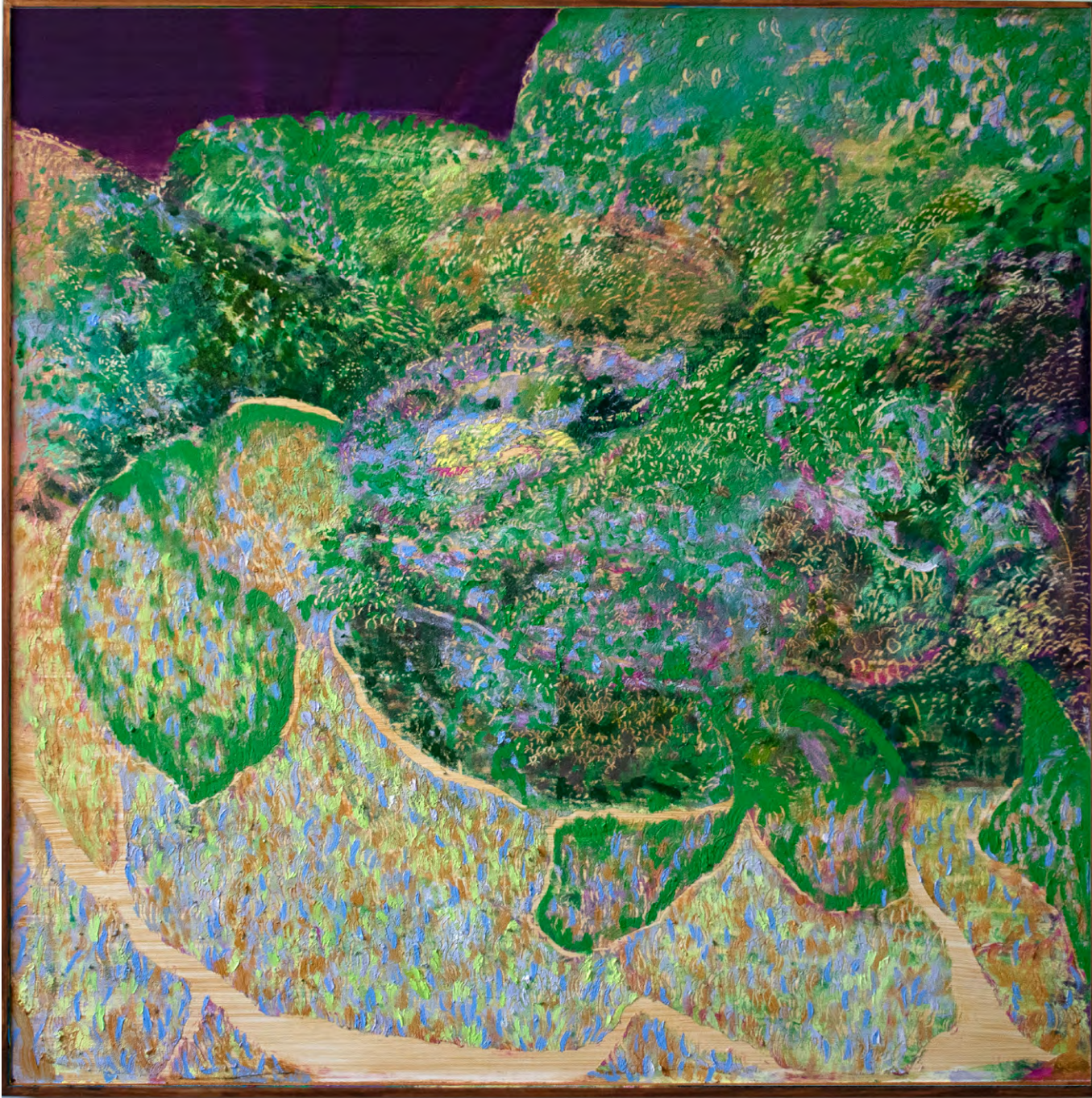
Ruskin Park  
40 x 40cm  
Oil paint and wax paste on framed board  
2023  
£2,250





Concave Green  
Diptych  
240 x 120cm  
Oil paint and wax paste on Canvas  
2023  
SOLD





Grandma's Garden  
80 x 80cm  
Oil paint and wax paste on framed board  
2023  
SOLD





Hampstead Heath  
40 x 40cm  
Oil paint and wax paste on framed board  
2023  
SOLD





Brockwell Gardens  
120 x 150cm  
Oil paint and wax paste on board  
2023  
SOLD





Rhododendron  
80 x 80cm  
Oil paint and wax paste on framed board  
2023  
SOLD





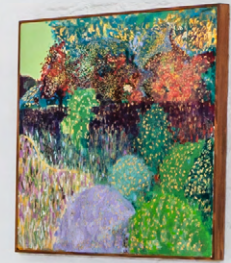
Cherry Walk  
60 x 60cm  
Oil paint and wax paste on framed board  
2023  
£2,950





Kew Gardens  
60 x 60cm  
Oil paint and wax paste on framed board  
2023  
SOLD



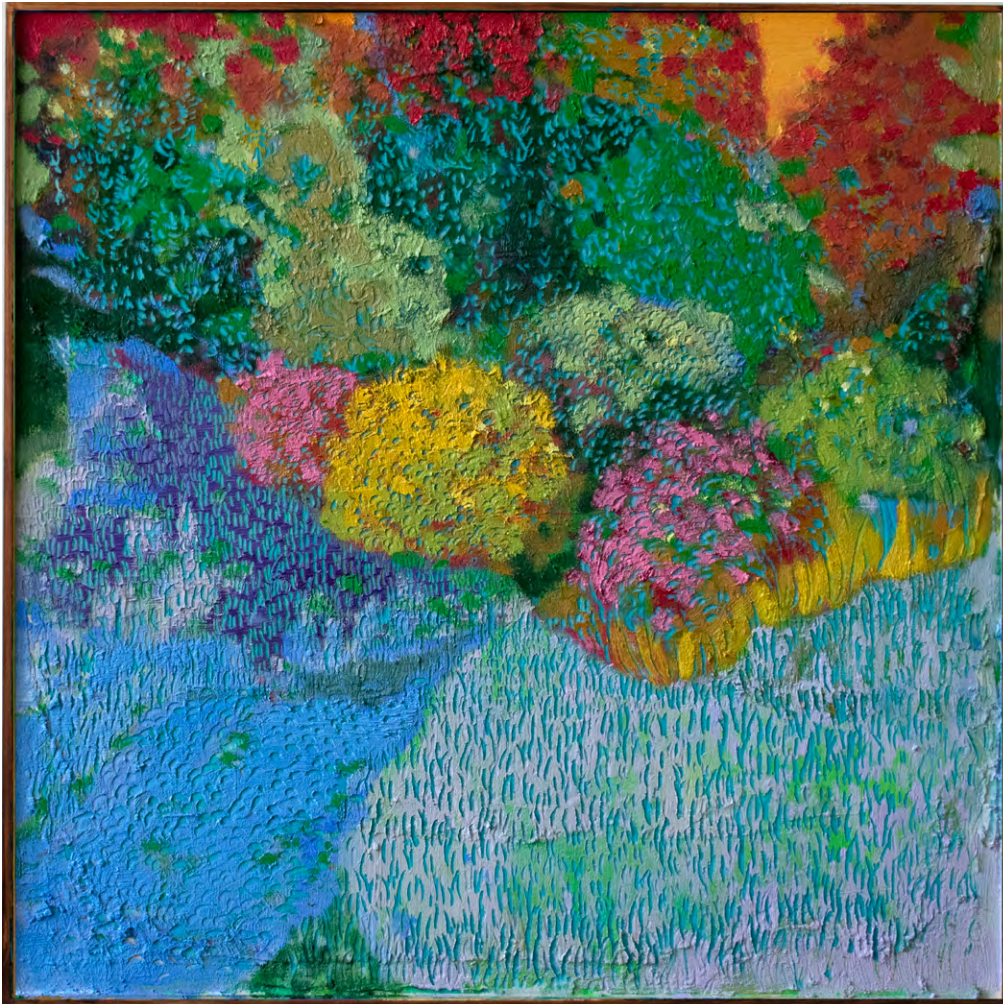






Woodland Glade  
80 x 80cm  
Oil paint and wax paste on framed board  
2023  
SOLD





Rookery Gardens  
40 x 40cm  
Oil paint and wax paste on framed board  
2023  
SOLD





Hedge rows, thick Alder Boughs  
60 x 60cm  
Oil paint and wax paste on framed board  
2023  
£2,950





Grandpa's Garden  
60 x 60cm  
Oil paint and wax paste on framed board  
2023  
SOLD





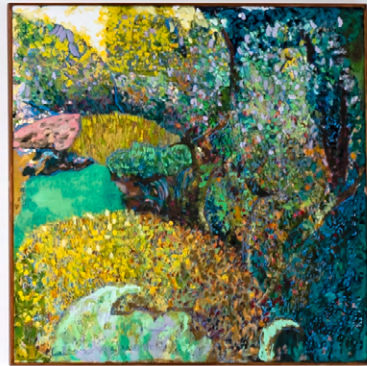
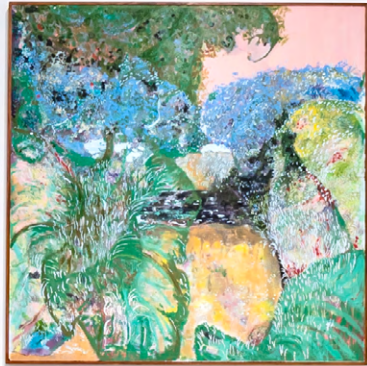
Old English Garden  
60 x 60cm  
Oil paint and wax paste on framed board  
2023  
£2,950



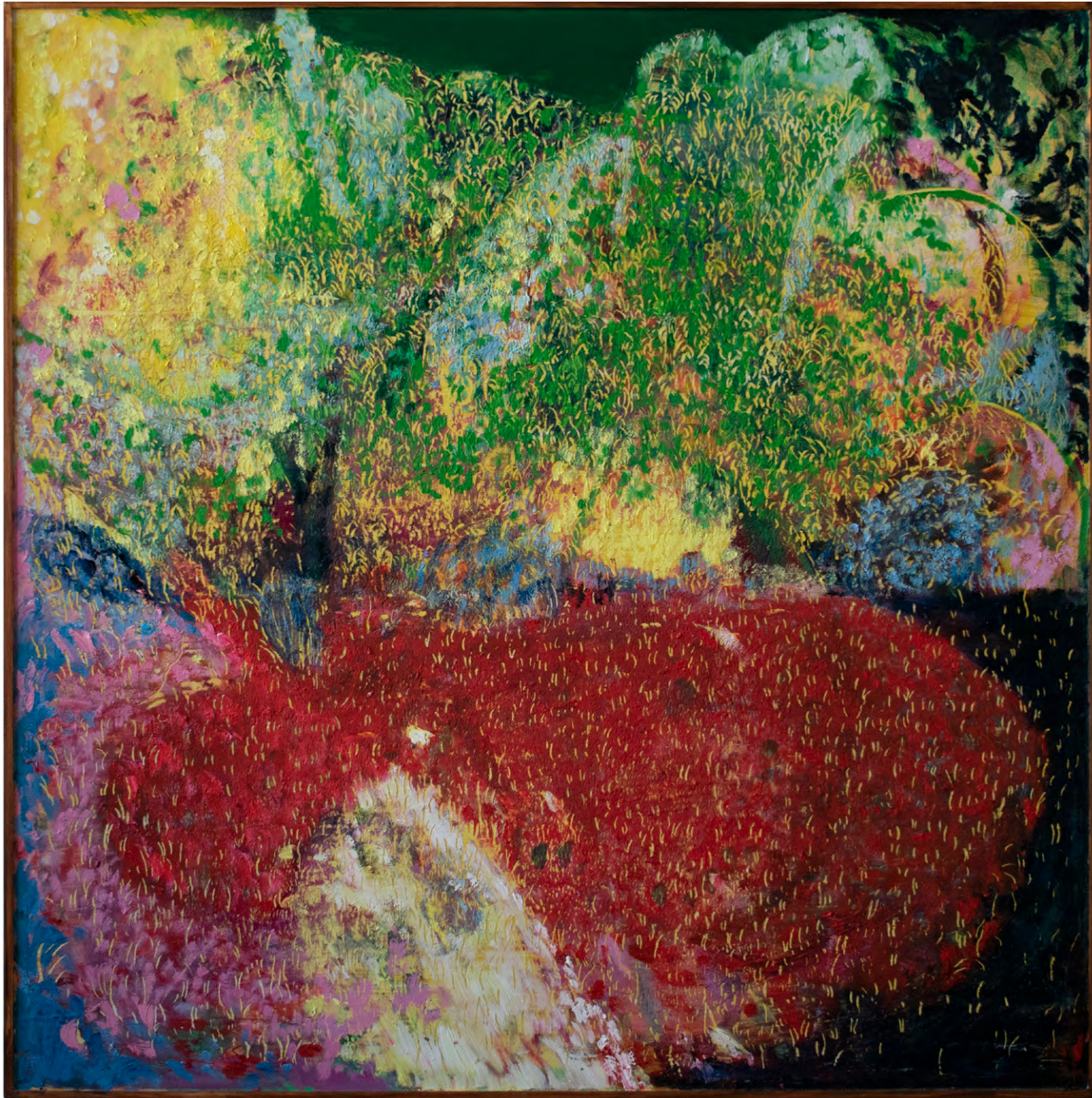


Thicket of Green  
60 x 60cm  
Oil paint and wax paste on framed board  
2023  
£2,950



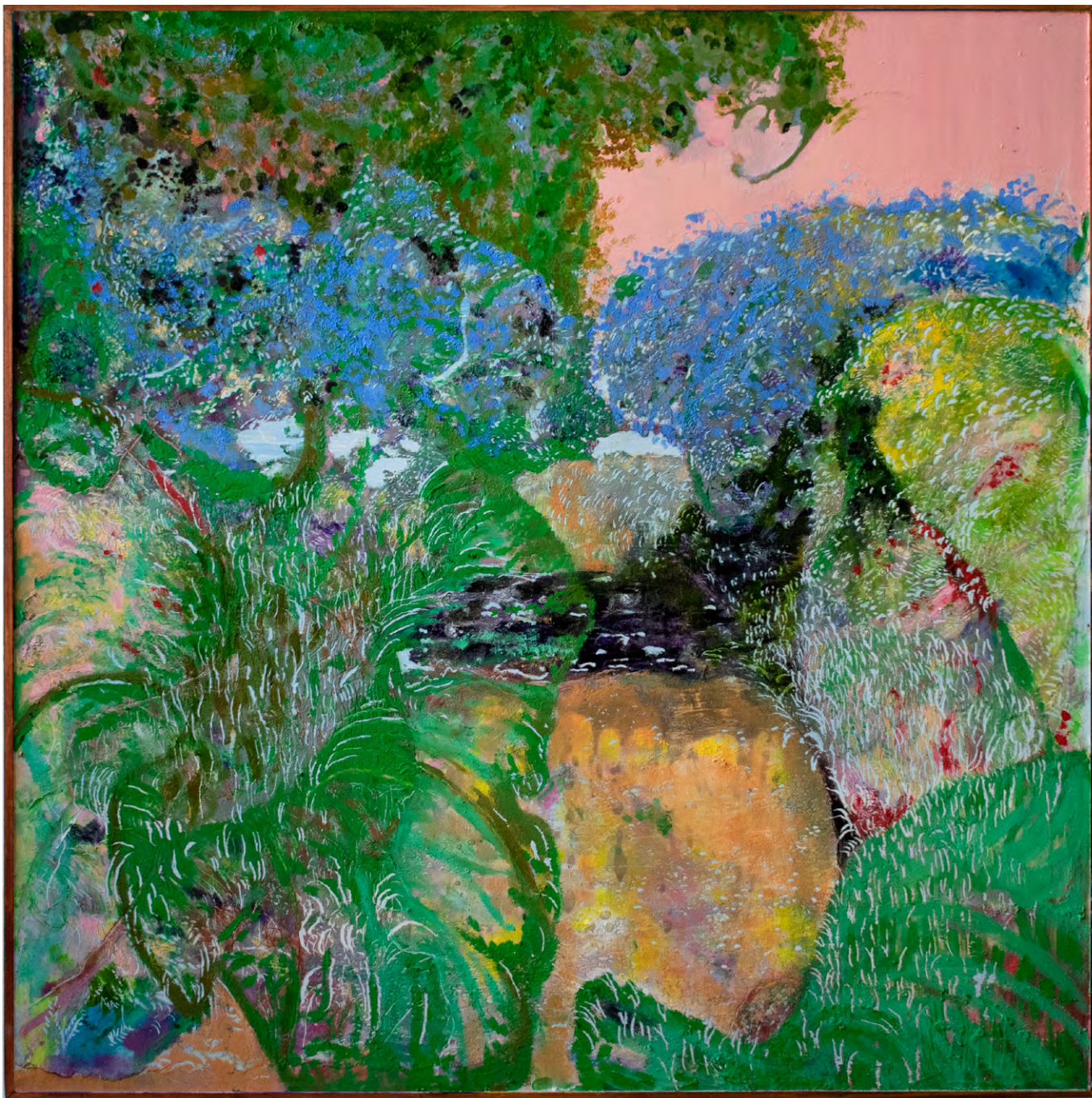






Folkstone Gardens  
80 x 80cm  
Oil paint and wax paste on framed board  
2023  
£3,950





Billy Track  
80 x 80cm  
Oil paint and wax paste on framed board  
2023  
SOLD





Flower beds and Shrubberies

80 x 80cm

Oil paint and wax paste on framed board

2023

SOLD





Redwood Grove  
80 x 80cm  
Oil paint and wax paste on framed board  
2023  
SOLD



## **Blue Shop Gallery**

72 BRIXTON ROAD

If you would like to purchase any of the works by Connie Harrison

please contact the team on [hello@blueshopcottage.com](mailto:hello@blueshopcottage.com)