



Blue Shop Gallery

72 BRIXTON ROAD

# *A Poison Tree*

Katy Papineau

6th - 23rd July 2023

@BLUESHOPCOTTAGE | BLUESHOPCOTTAGE.COM

# Katy Papineau

Katy Papineau (b.1991) is a figurative painter who lives and works in London. She graduated in Philosophy from the University of Bristol in 2014, and completed The Drawing Year at The Royal Drawing School in 2019. Since graduating she has participated in artist residencies in France and Italy, and has taken part in group shows at Blue Shop Gallery, Christie's London, Frestonian Gallery, and Compton Verney, among others. Papineau is currently part of the faculty at the Royal Drawing School, where her teaching focuses on symbolism, memory and imagination.

Papineau's practice encompasses drawing, painting and printmaking. Colour is an essential vehicle through which she conveys emotion and atmosphere, working instinctively in thin layers of paint and pigment. These layers combine to result in a subtle complexity of colour, pattern and texture. Papineau is influenced by the stage-like spaces found in medieval illuminated manuscripts and the Sieneese School of painting, which provide a setting for protagonists to act out scenes of her orchestration.

Papineau's process involves a wealth of references. Initially guided by a loosely defined area of interest, she begins a body of work by collecting visual scraps from everyday life, film, literature, folklore and art history. During this stage of image gathering, she allows the original concept to evolve, creating a large quantity of drawings from which distinct themes begin to emerge. Once a motif has been identified as a rich area for image-making, she looks at it from every angle, dissecting its meaning in culture, as well as analysing its more personal symbolism. These varied visual inputs combine to form ambiguous narrative paintings that make up Papineau's distinctive visual universe.

## A POISON TREE

Named for Blake's poem of trickery and wrath, this body of work is an exploration of the nature of memory and the minds of others. Papineau uses symbolic imagery to investigate themes of freedom and constraint, discovery and ignorance.

Fictional characters populate a fantasy world, acting out ambiguous narratives. Papineau applies thin layers of oil paint and pigment onto wooden panels, resulting in a gentle complexity of colour. This dreamy soft-focus gives the sense that each painting is a memory, mythologised by the passage of time. Just like remembering an event from long ago, the viewer accesses these hazy images as if through a wall of glass.

There is a joyful, tender aspect to many of these scenes, but something more complex sits beneath the surface. Papineau's dream world is populated by confusion and secrecy. The artist grapples with the questions: To what extent can we know other minds? Can we trust our perceptions? How does it feel to live in multiple realities? In 'A Poison Tree', she has created a personal universe that contains her fears, hopes, and unanswered questions.



# 'A Poison Tree'

by William Blake

*I was angry with my friend;  
I told my wrath, my wrath did end.  
I was angry with my foe:  
I told it not, my wrath did grow.*

*And I waterd it in fears,  
Night & morning with my tears:  
And I sunned it with smiles,  
And with soft deceitful wiles.*

*And it grew both day and night.  
Till it bore an apple bright.  
And my foe beheld it shine,  
And he knew that it was mine.*

*And into my garden stole,  
When the night had veild the pole;  
In the morning glad I see;  
My foe outstretched beneath the tree.*



'Girl, Thinking'. Katy Papineau, 2023, 20 x 15cm, Oil and pigment on panel

Blue Shop Gallery PRESENTS

Katy Papineau

# A Poison Tree

6th - 23rd July 2023

OPENING TIMES

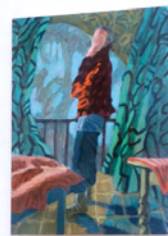
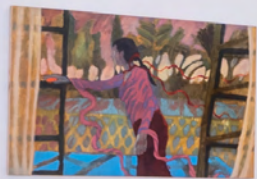
Wednesday - Sunday | 11am - 6pm  
[Blueshopcottage.com/Exhibitions](http://Blueshopcottage.com/Exhibitions)

Opening Drinks Wednesday 5th July 6-9pm  
RSVP [hello@blueshopcottage.com](mailto:hello@blueshopcottage.com)

[BlueShopCottage.com](http://BlueShopCottage.com) | [@blueshopcottage](https://www.instagram.com/blueshopcottage)

EXHIBITION  
DOWNSTAIRS







1. 'Strange Taste'  
2023  
61 x 91cm  
Oil and pigment on panel  
SOLD



2. 'Green Wind'  
2023  
61 x 91cm  
Oil and pigment on panel  
£2,950



3. 'Summer Trip'  
2021  
22.5 x 32cm  
Oil on board  
Framed in maple  
SOLD





4. 'Muddled Light'  
2022  
22.5 x 30cm  
Oil on board  
Framed in maple  
SOLD



5. 'Slithering Hours'  
2023  
46 x 61cm  
Oil, oil bar and pigment on panel  
£1,950



6. 'A Sleep of Apples'  
2023  
61 x 91cm  
Oil and pigment on panel  
£2,950



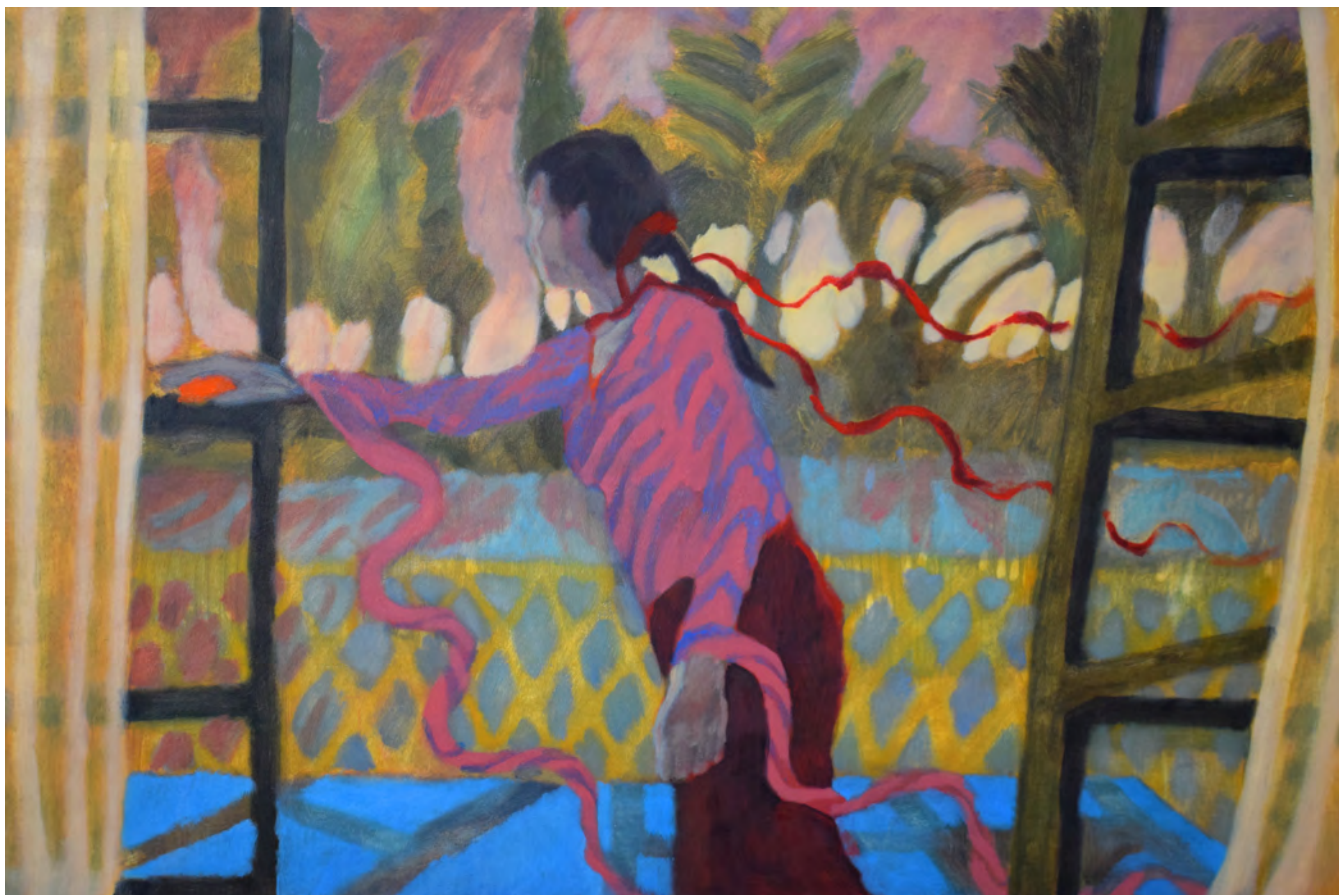
7. 'Wall Of Glass'  
2023  
46 x 61cm  
Oil, oil bar and pigment on panel  
£1,950



8. 'Happiness (after Varda)'  
2022  
31 x 41cm  
Oil on panel  
£950



9. 'Two Lives'  
2023  
41 x 51cm  
Oil and pigment on panel  
SOLD



10. 'Unravelling'  
2023  
61 x 91cm  
Oil and pigment on panel  
SOLD



11. 'Girl, Thinking'  
2023  
20 x 15cm  
Oil and pigment on panel  
SOLD





12. 'A Poison Tree'  
2023  
46 x 61cm  
Oil and pigment on panel  
SOLD



13. 'An Apple Bright'  
2023  
41 x 41cm  
Oil and pigment on panel  
£1,250



14. 'Sour Beacons'  
2023  
42 x 56 x 4.5cm  
Oil and pigment on canvas  
£1,650



15. 'Red Shift'  
2023  
61 x 91cm  
Oil and pigment on panel  
£3,050



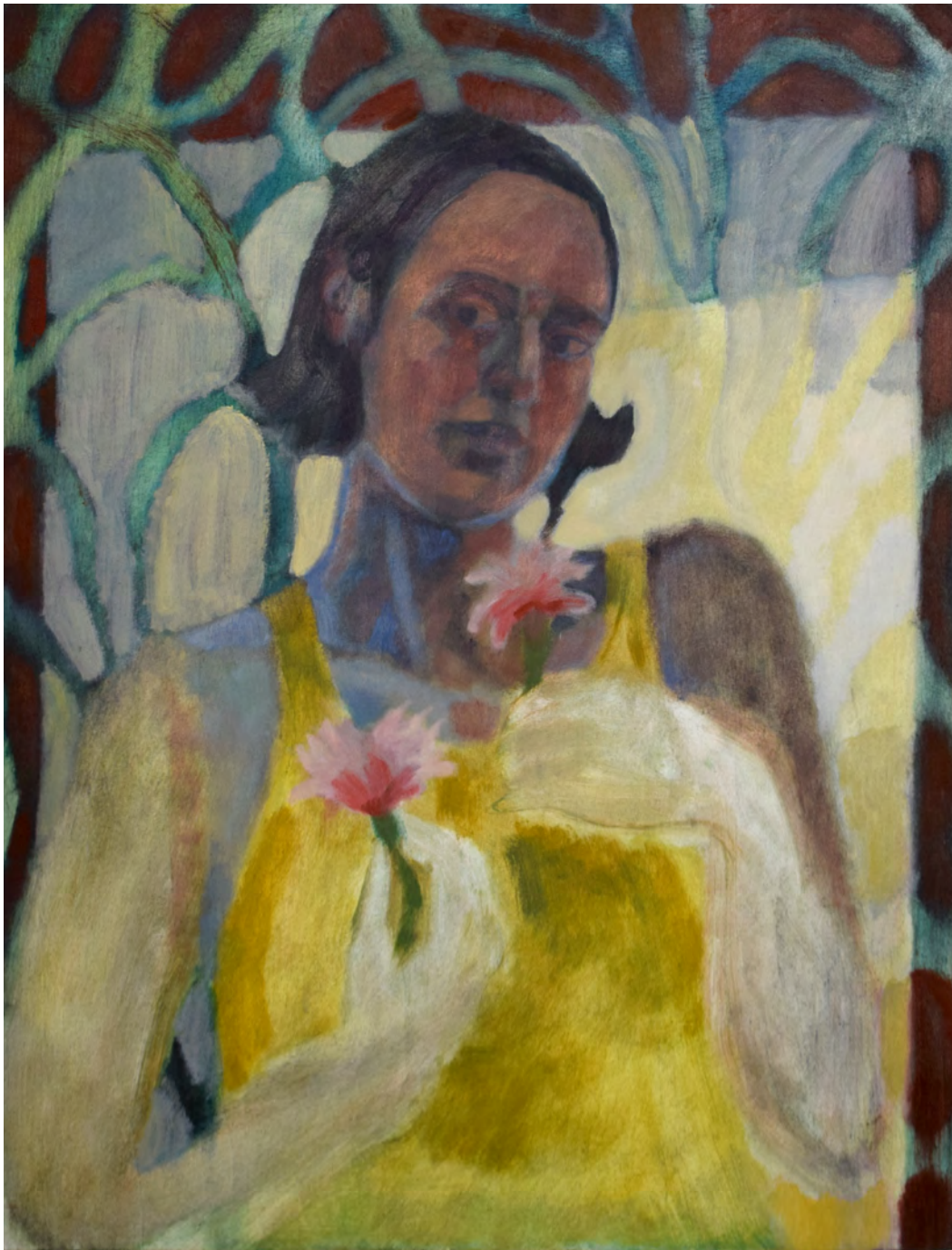
16. 'A Velvet Ribbon'  
2023  
51 x 51cm  
Oil and pigment on panel  
£2,250



17. 'Dreams at her railing'  
2023  
42 x 56 x 4,5cm  
Oil and pigment on canvas  
£1,650



18. 'Boy, Thinking'  
2023  
20 x 15cm  
Oil and pigment on panel  
SOLD



19. 'Katy Calm Down (After Modersohn-Becker)'  
2023  
46 x 61cm  
Oil and pigment on panel  
SOLD





20. 'Semaphore'  
2022  
30 x 40cm - framed size  
Oil on paper  
Framed in walnut  
SOLD



21. 'Hot Sky'  
2022  
30 x 40cm - framed size  
Oil on paper  
Framed in walnut  
SOLD



22. 'Faded Land'  
2021  
51 x 53cm - framed size  
Pigment & watercolour medium on paper  
Framed in dark green frame  
SOLD



23. 'Twisting Feeling'  
2023  
Diptych  
81 x 51cm  
Oil and pigment on panel  
£2,100



24. 'Illuminated figures (After Piero)'  
2022  
43 x 53cm - framed size  
Oil on paper  
Framed in maple  
£1,075



25. 'Someone set the house on fire'  
2022  
41 x 50,5cm - framed size  
Oil on paper  
Framed in maple  
£1,035





26. 'Swaying Moon'  
2023  
51 x 25cm  
Oil and pigment on panel  
£1,150





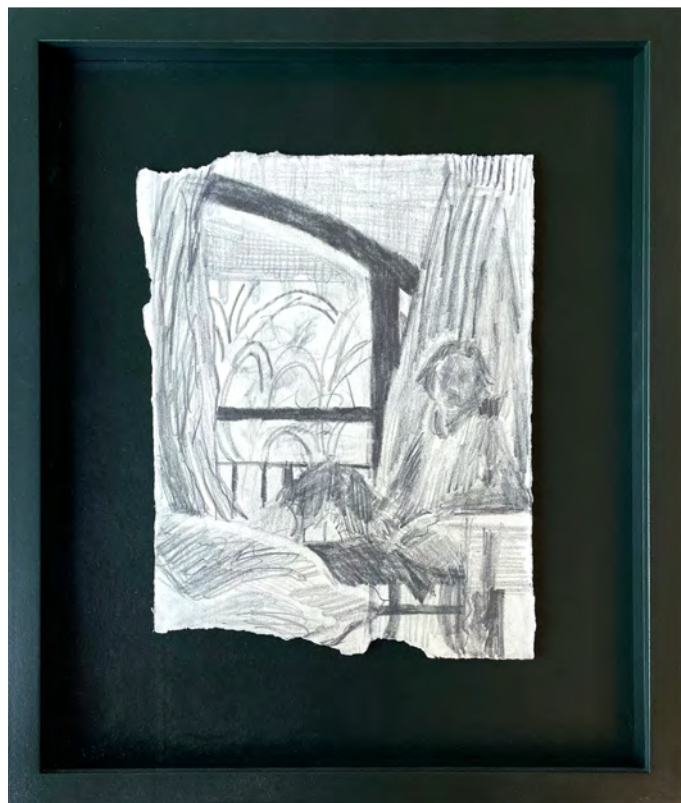
27. 'Frozen Moon'  
2023  
51 x 25cm  
Oil and pigment on panel  
£1,150



28. 'Watching !'  
2022  
24 x 29cm - framed size  
Pencil on paper  
Framed in dark green frame  
£510



29. 'Watching II'  
2022  
24 x 29cm - framed size  
Pencil on paper  
Framed in dark green frame  
£510



30. 'Watching III'  
2022  
24 x 29cm - framed size  
Pencil on paper  
Framed in dark green frame  
£510



31. 'Bathing I'

2021

27 x 32cm - framed size

Pigment and watercolour medium on paper

Framed in dark green frame

SOLD



32. 'Bathing II'

2021

27 x 32cm - framed size

Pigment and watercolour medium on paper

Framed in dark green frame

SOLD



33. 'Bathing III'

2021

27 x 32cm - framed size

Pigment and watercolour medium on paper

Framed in dark green frame

SOLD



34. 'Warm Ferments'  
2021  
39 x 50cm - framed size  
Pigment and watercolour medium on paper  
Framed in green frame  
£905





35. 'Cracking Underfoot'  
2021  
30 x 39cm - framed size  
Pigment and watercolour medium on paper  
Framed in green frame  
£715



36. 'Concealment'  
2023  
40 x 30cm - framed size  
Oil on paper  
Framed in maple frame  
£775



37. 'Green Branches'  
2023  
41.5 x 47.5cm - framed size  
Monotype on paper  
Framed in maple frame  
SOLD



38. 'He's Behind You! (After Vuillard)'

2022

46 x 61cm

Oil and acrylic on panel

SOLD



'Hand-Washing (after Bonnard)'

Monotype

36cm x 30cm

£390



'Look Out'  
Monotype  
35cm x 28cm  
£390



'At Her Bath'  
Monotype  
36cm x 30cm  
£390



'You're Terrible'  
Monotype and pigment  
35.5cm x 30cm  
£400



## **Blue Shop Gallery**

72 BRIXTON ROAD

If you would like to purchase any of the works by Katy Papineau

please contact the team on [hello@blueshopcottage.com](mailto:hello@blueshopcottage.com)