



Blue Shop Gallery

72, BRIXTON ROAD, OVAL

Orla Kane

# FIELDS ADRIFT

A SOLO EXHIBITION OF  
WORKS ON PAPER & CANVAS

11th - 28th January 2024

**Orla Kane (B.1999) is a Scottish artist based in Glasgow. She graduated from The Glasgow School of Art in 2021 before attending the Royal Drawing School's Intensive Term in 2022. Orla Kane exhibited in Blue Shop Gallery's 'Works On Paper 5'. Recent solo show's include Star Face, Boardroom Committee Room, Glasgow, 2023 and Daisy Chains, Stallan-Brand, Glasgow, 2022 as well as being selected for 130 Years of Scottish Society of Artist's Annual Show at the Royal Scottish Academy, 2022-23.**

Orla Kane's practice is a poetic exchange between landscape and recollection. Her landscape subjects are rooted in the rural Scottish Borders where she spent her childhood, remembering the expanse of rolling hills and fields through car, train, and bedroom windows. Dizzying journeys clouded by daydreams alongside inherited mythologies shape the narrative of her work. Working between drawing and painting, Kane's layered works carve out landscapes and patterns. Coloured pencil lines weave together to create tapestries that mimic memories of handmade quilted blankets and patchworked hills marked by electric fence.

Ageing with time, her drawings shadow the lifecycle of an idea, creating stories continuously translated and retold. Images are drawn over and over one another as faint iterations of soft lead and pigment are blended into the collage and uncovered months later by rubber or scalpel, cutting into the space to make permanent. Oil paintings sit alongside drawings; these small works on board have been cyclically in progress since Kane finished art school in 2021, reworked and recontextualised over Kane's most formative years. Travelling through various lives, these paintings are a sketchbook for developing colours and imagery which follow the evolutions of Kane's practice.

This new series of work presents a strong sense of seasonal change - a weathered, harsher way of making. These drawings are born from late nights working with glimpses of artificial light illuminating new landscapes. In these shorter days her work reminisces on Italo Calvino's descriptive universe in *Cosmicomics*, forging new worlds from dark chasmic days.

Squares of colours and patterns are patchworked together on thick paper (sometimes stitched together themselves) which provides a canvas to pull different threads of thought and feeling together. Lighter applications of earlier work collide with confident bursts of colour and line, upheaving fireworks to construct the eternally present celestial and emotional forms of hearts, stars, moons, and flowers. These forms illuminate the hills and fields they originally emerged from as they shape, explore, and distort dynamic and recursive landscapes.

Kane observes the whimsy imagery of the day-to-day into her work, a contrast between doodles and passing time, with the endless subject matter of landscapes informing each work. These distorted and warmly ghosted landscapes crystallise into rough cut gemstone forms as hearts erupt from volcanic lines and flowers bloom into new days.

**Blue Shop Gallery**

72 BRIXTON ROAD, OVAL



Ohla Kane  
FIELDS  
ADRIET

A SOLO EXHIBITION OF  
WORKS ON PAPER & CANVAS

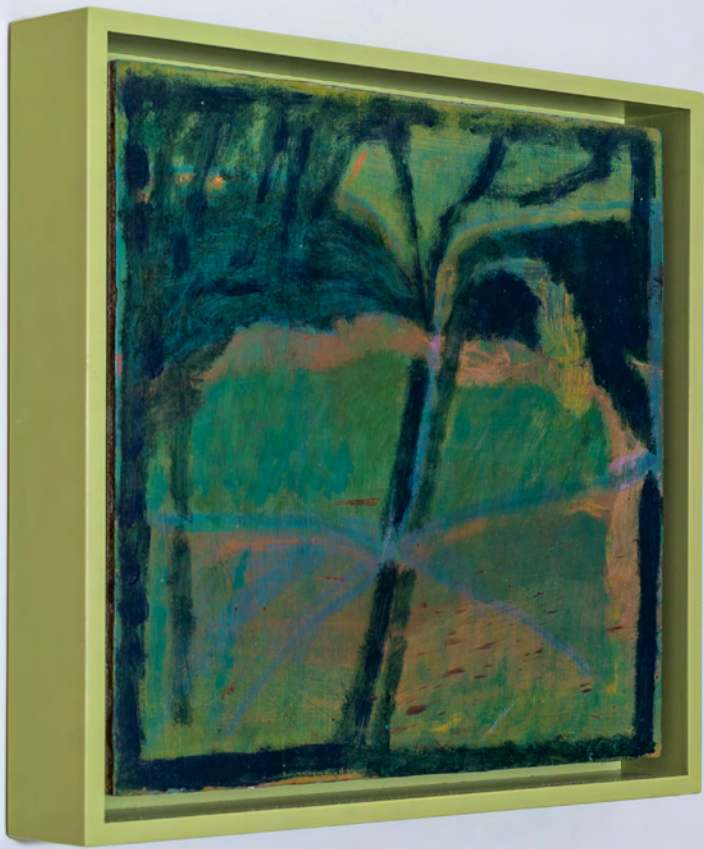
28th January 2024

WORKS ON PAPER & CANVAS

hello@bluecollarart.com









Blue Shop Gallery | 'Fields Adrift' - Orla Kane



'Tree Kiss', Oil and wax on board, 20x20cm - artwork size, framed in apple green tray frame | **SOLD**



'Fairy Field', Oil and wax on board, 25 x 20.5cm - artwork size, framed in lilac tray frame | £850





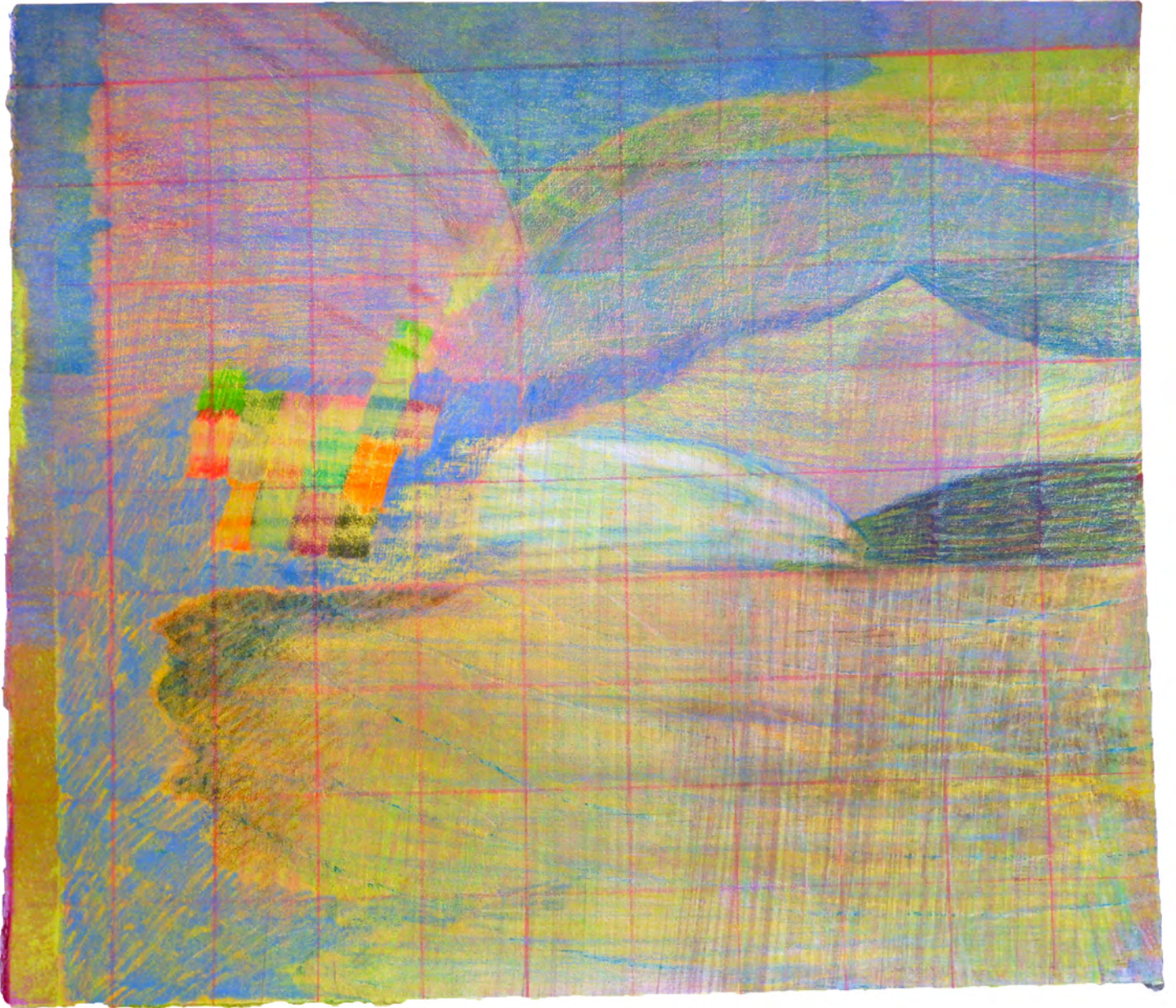


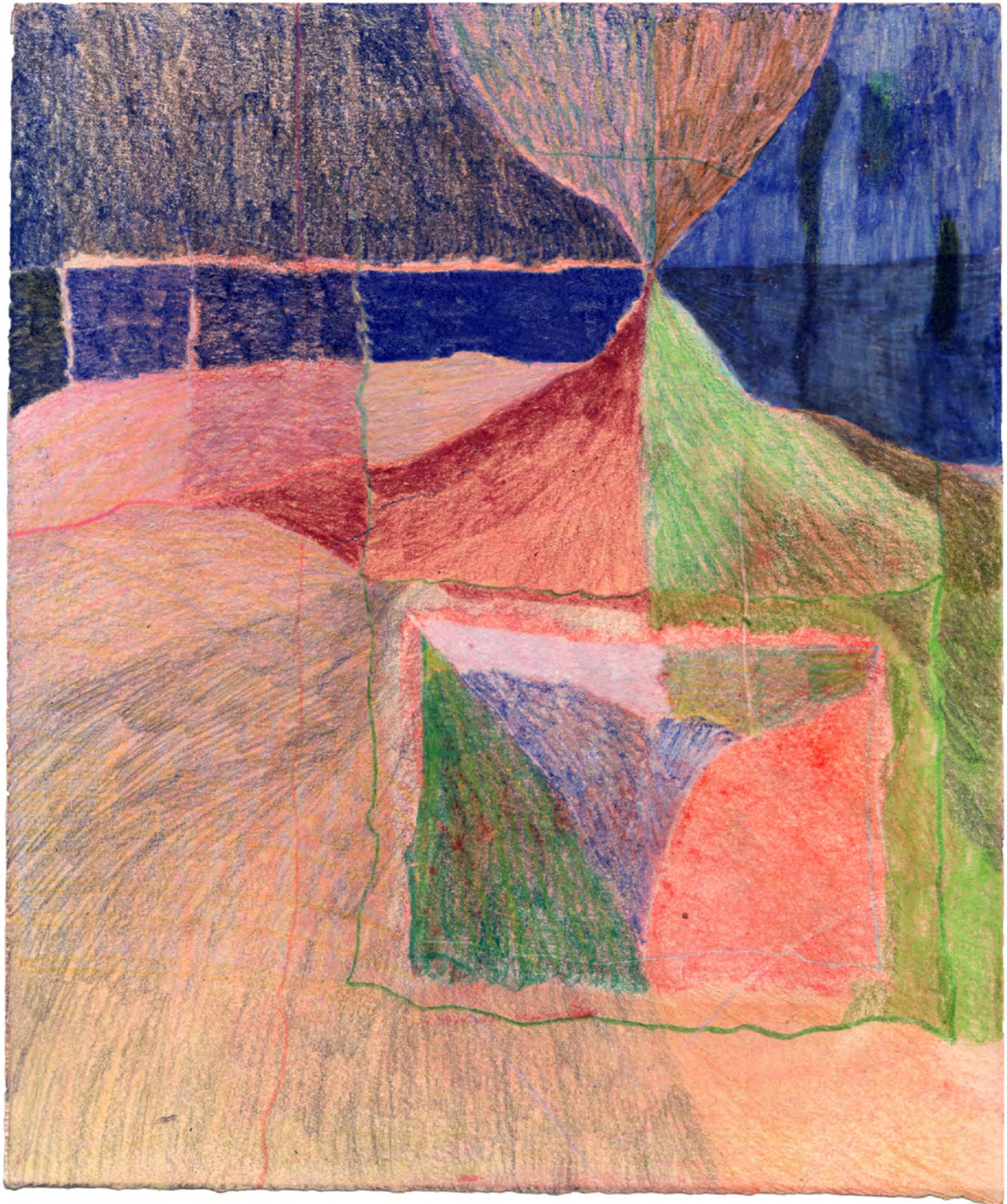
All framed works on paper by Orla Kane are expertly framed in beech wood with anti-reflective glass



**Blue Shop Gallery**

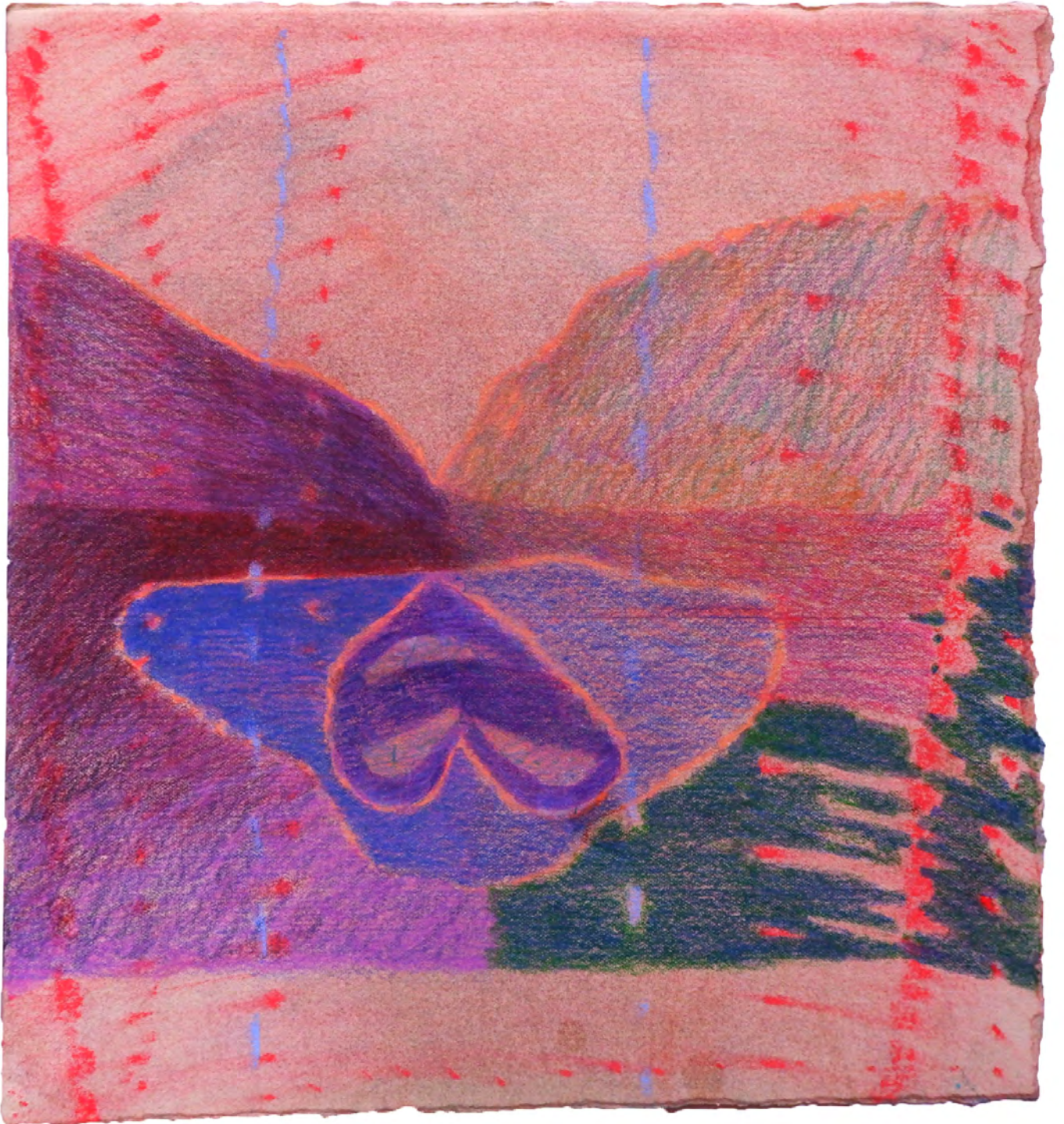
72 BRIXTON ROAD, OVAL





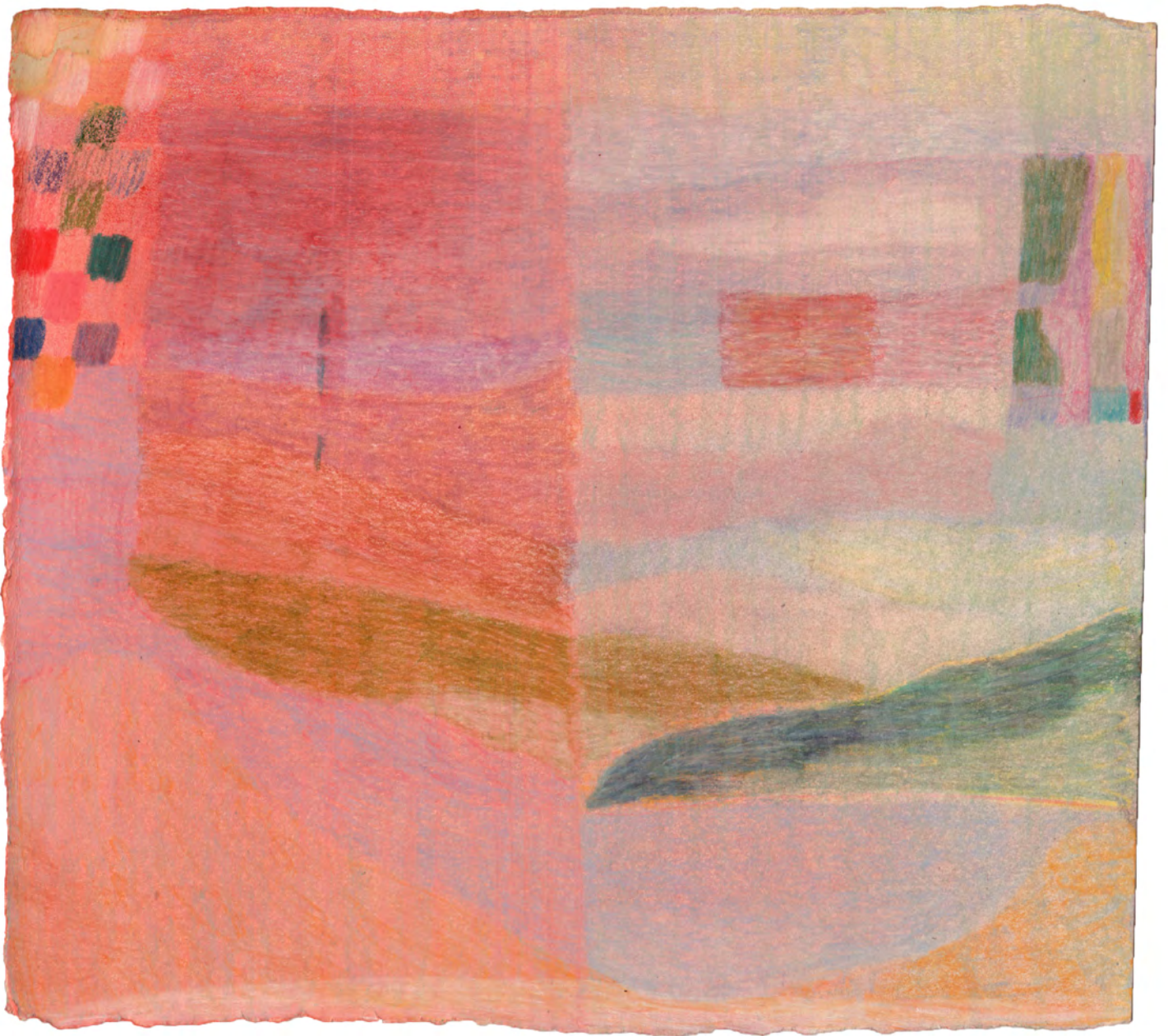


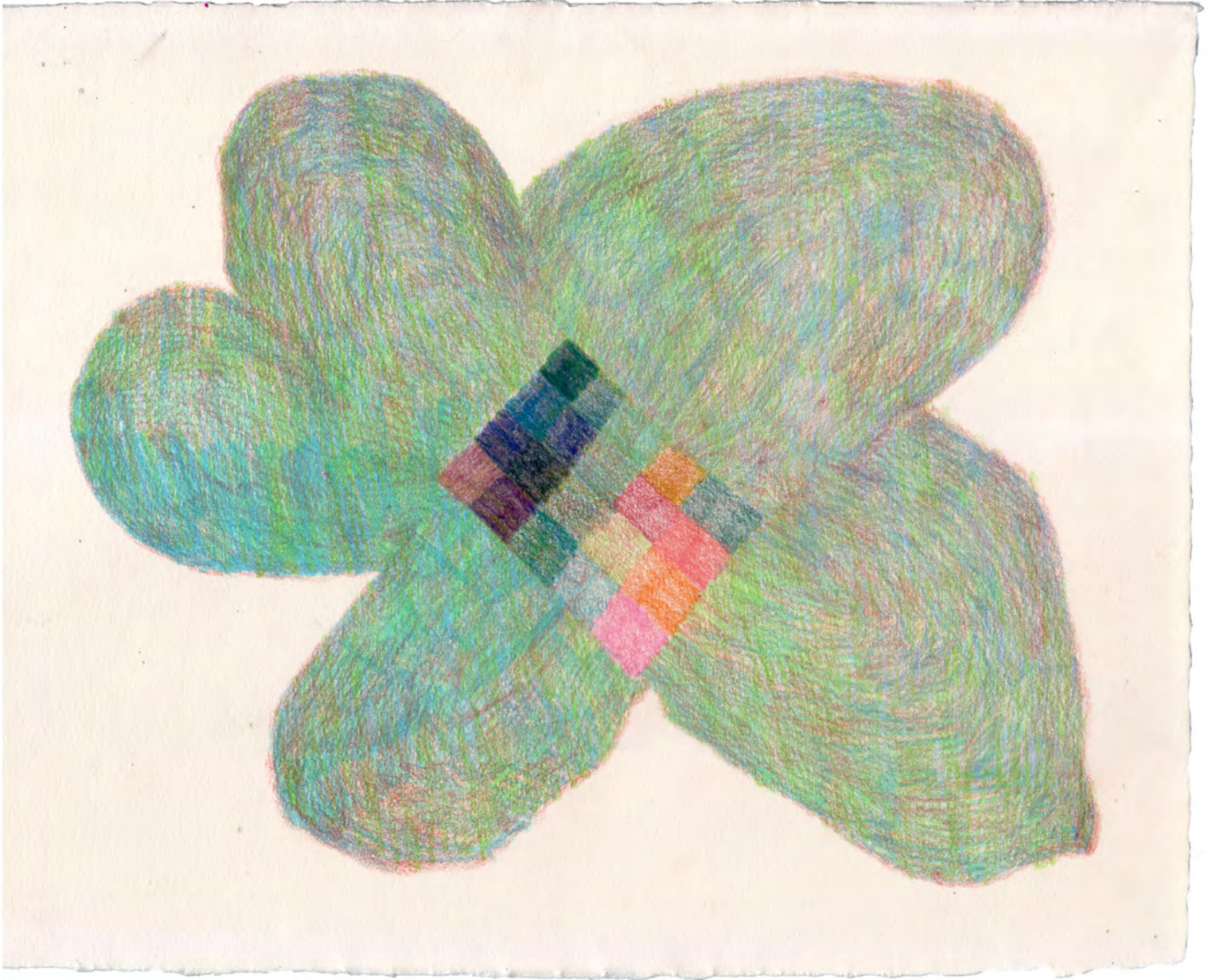






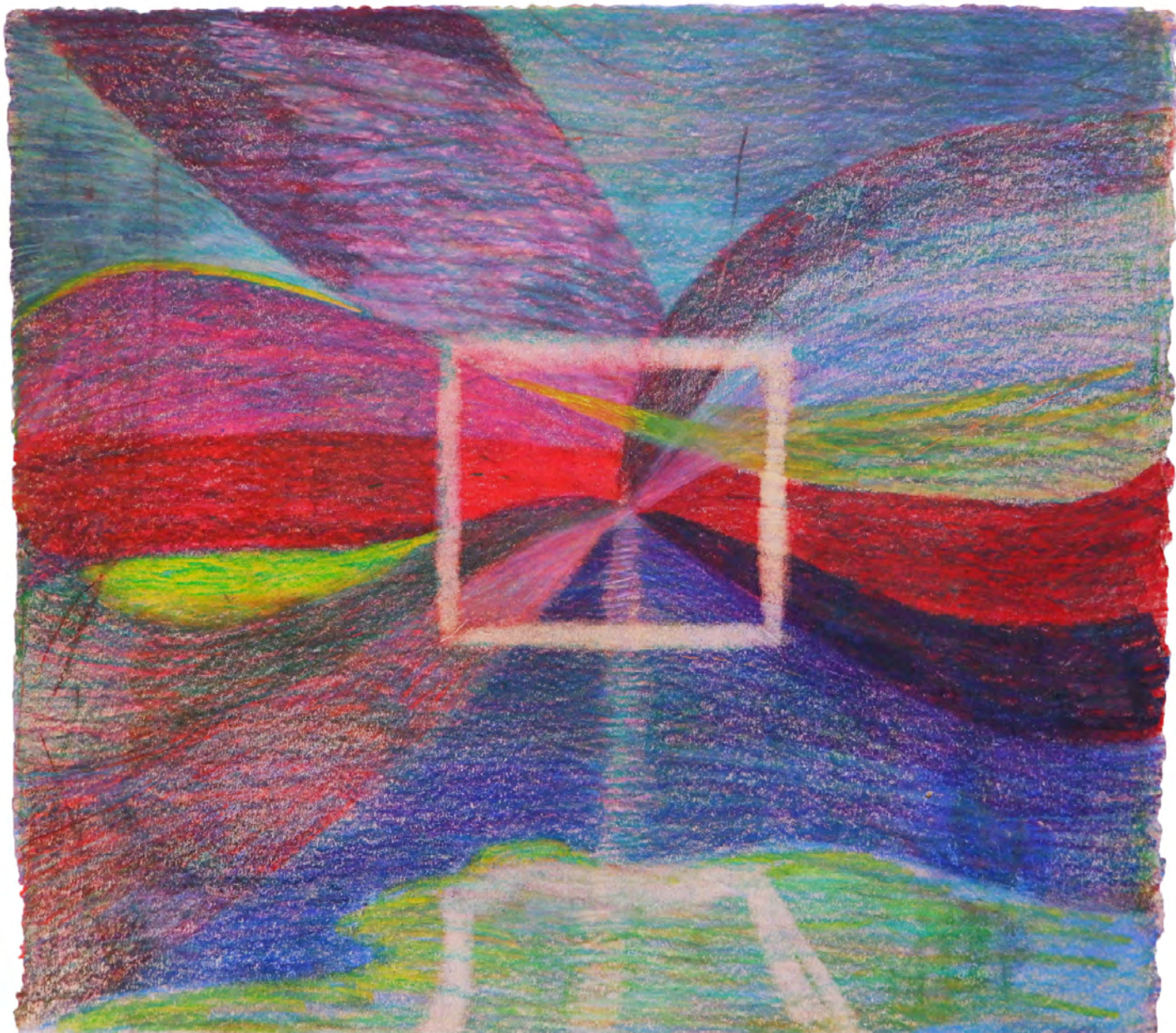






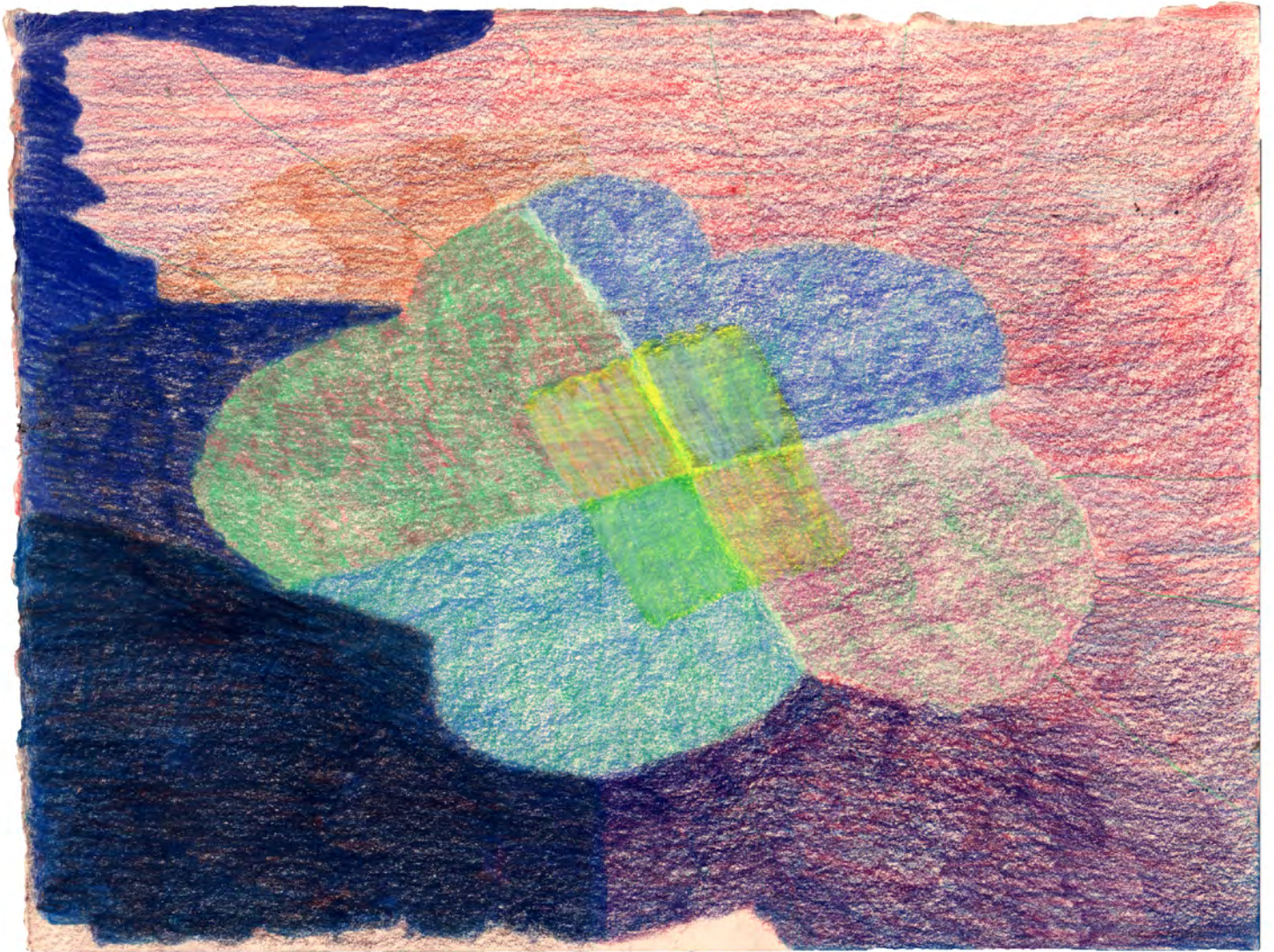
'Flower Hug', Coloured pencil on paper, 29.5 x 24cm - artwork size, framed in beech | £700



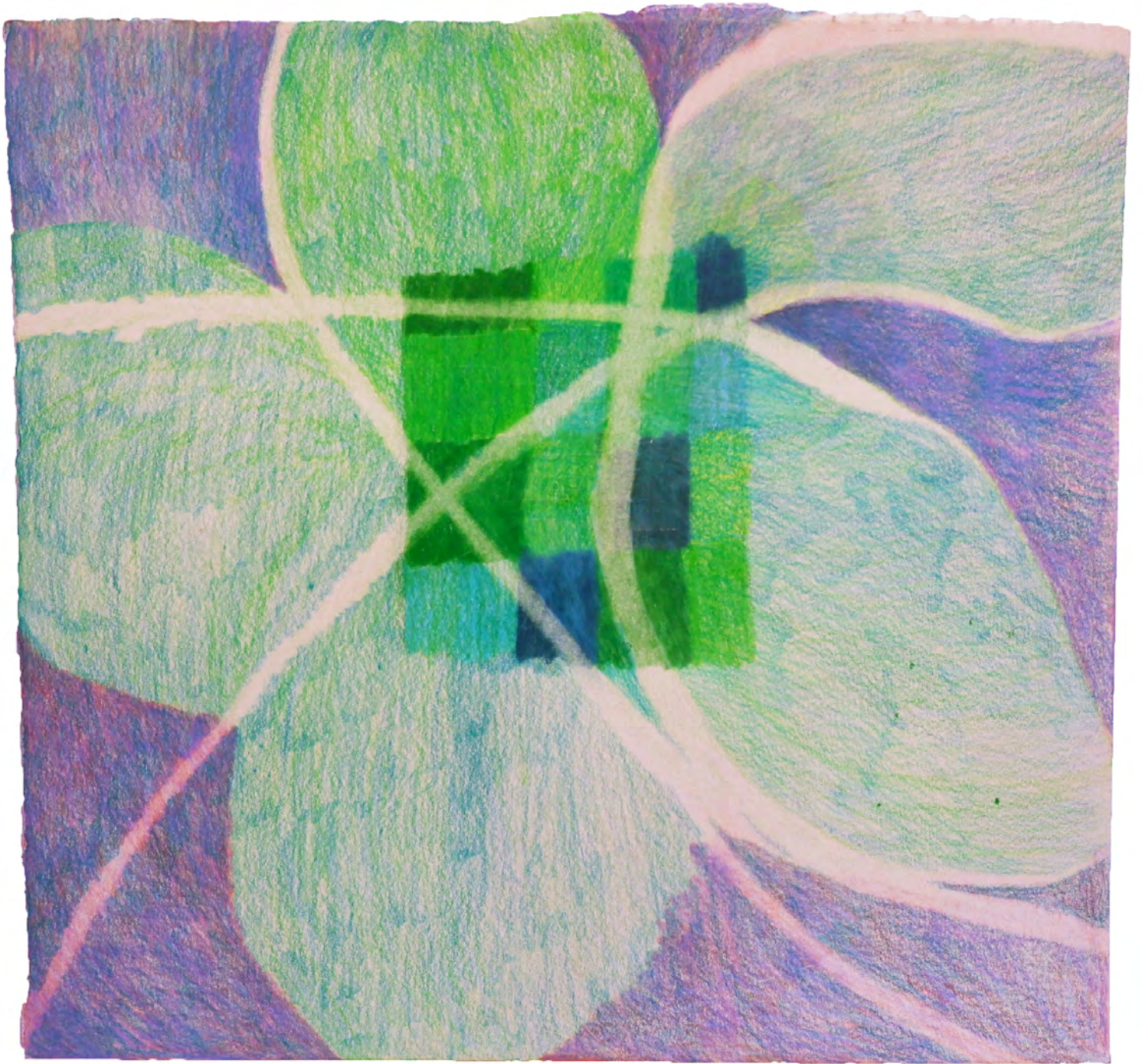
















'Ruby', Coloured pencil on paper, 24.5 x 20.5cm - artwork size, framed in beech | £600



'Sandcastle', Coloured pencil on paper, 30 x 26cm - artwork size, framed in beech | £700



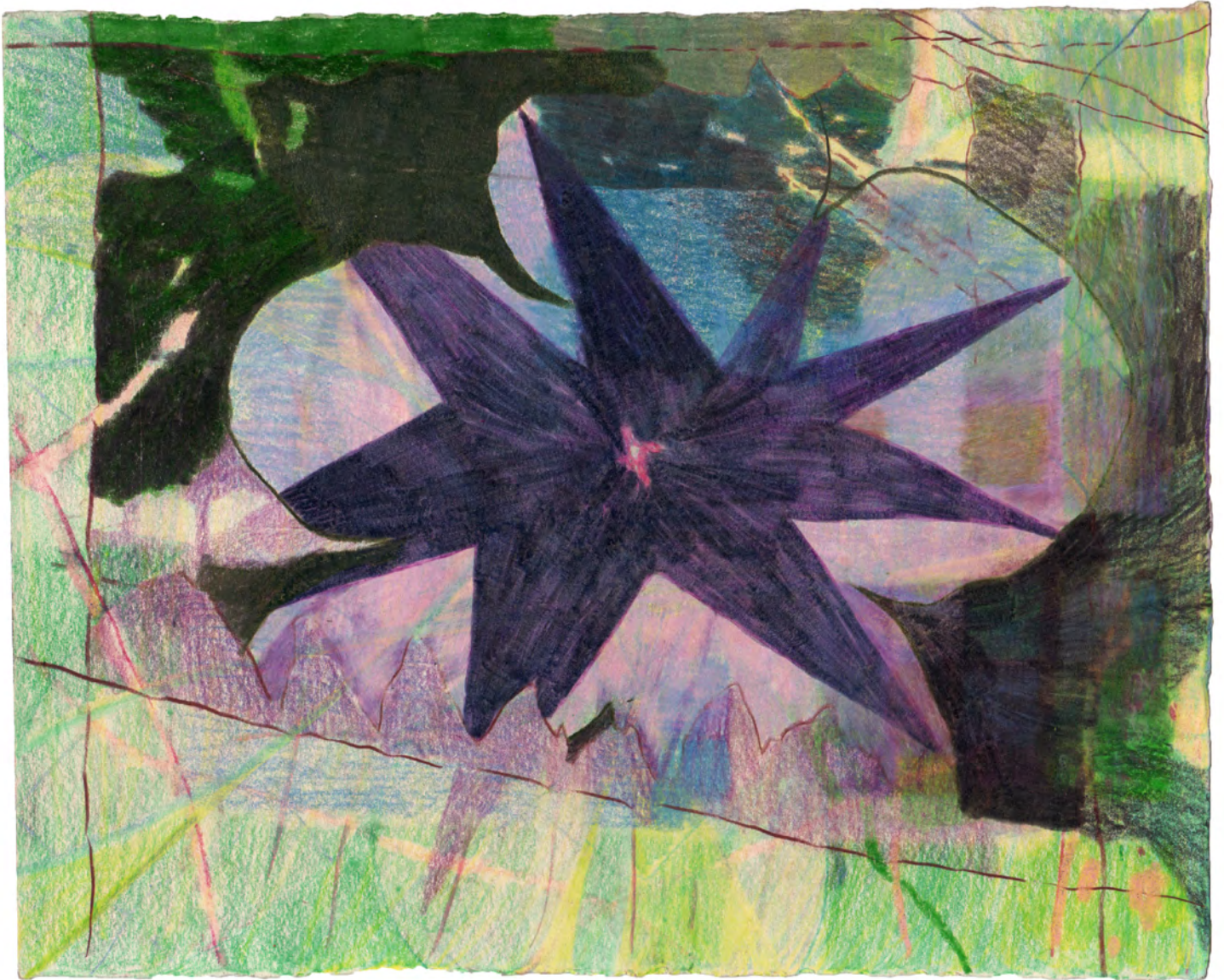






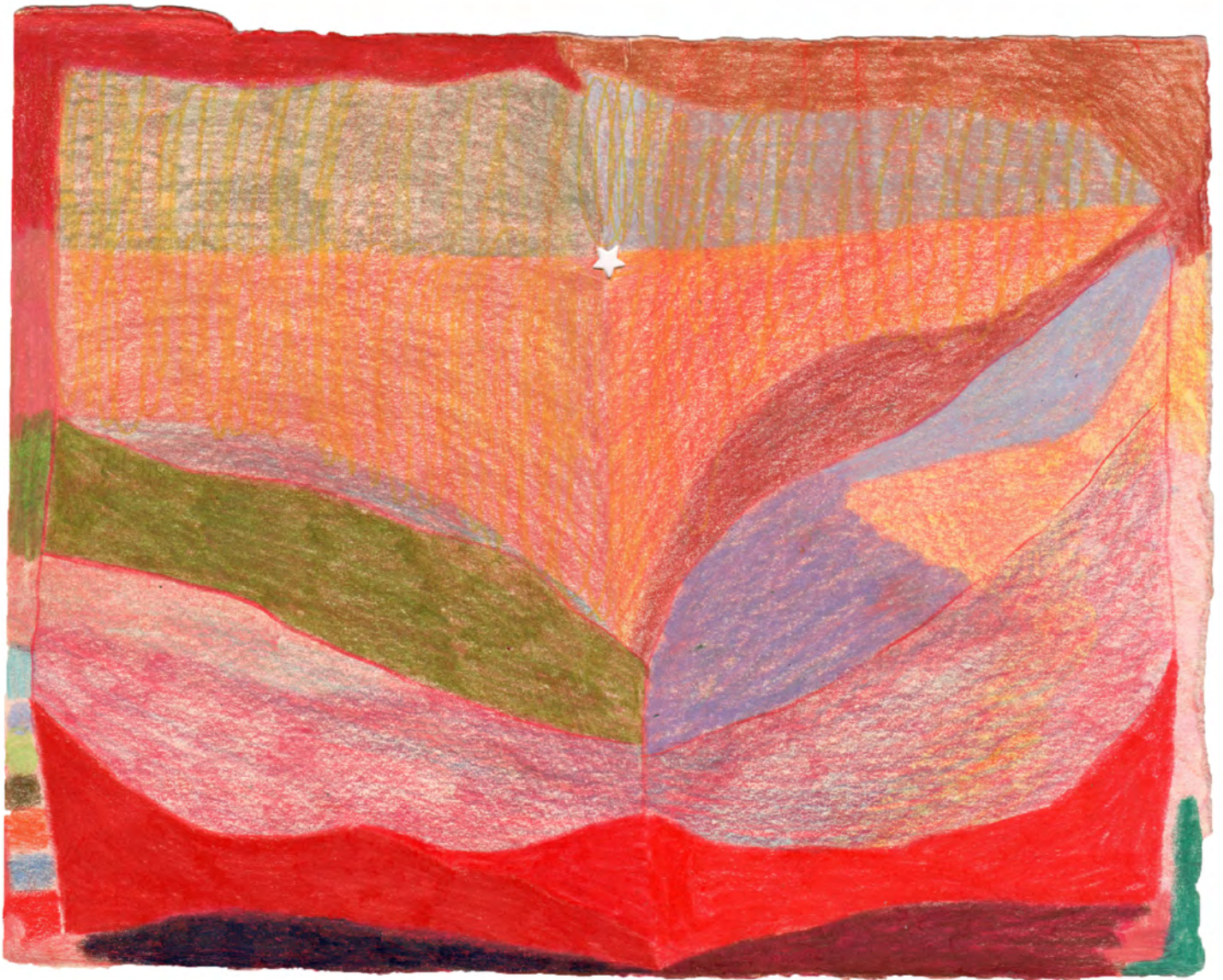




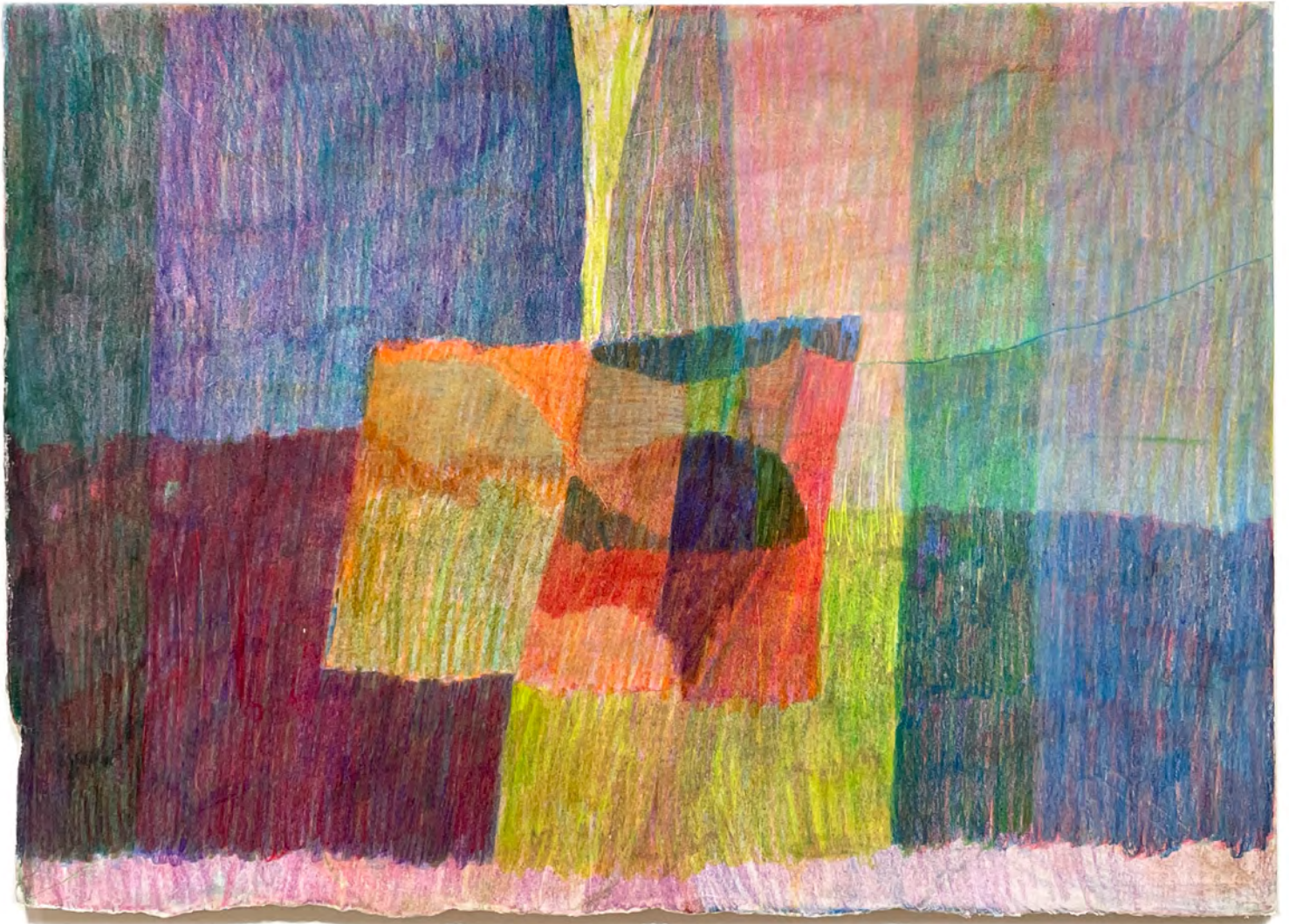












'Stream', Coloured pencil on paper, 38.5 x 28cm - artwork size, framed in beech | £800

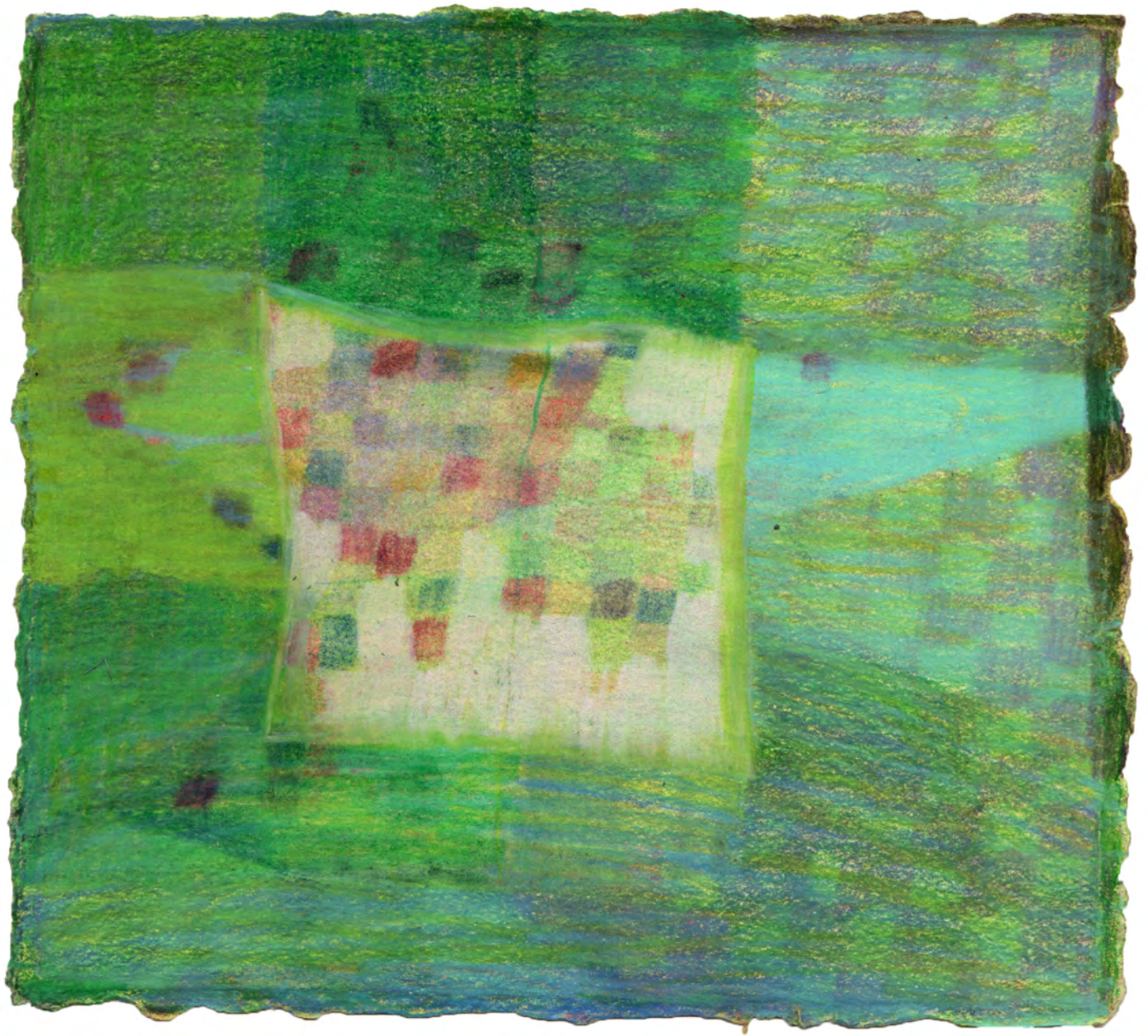


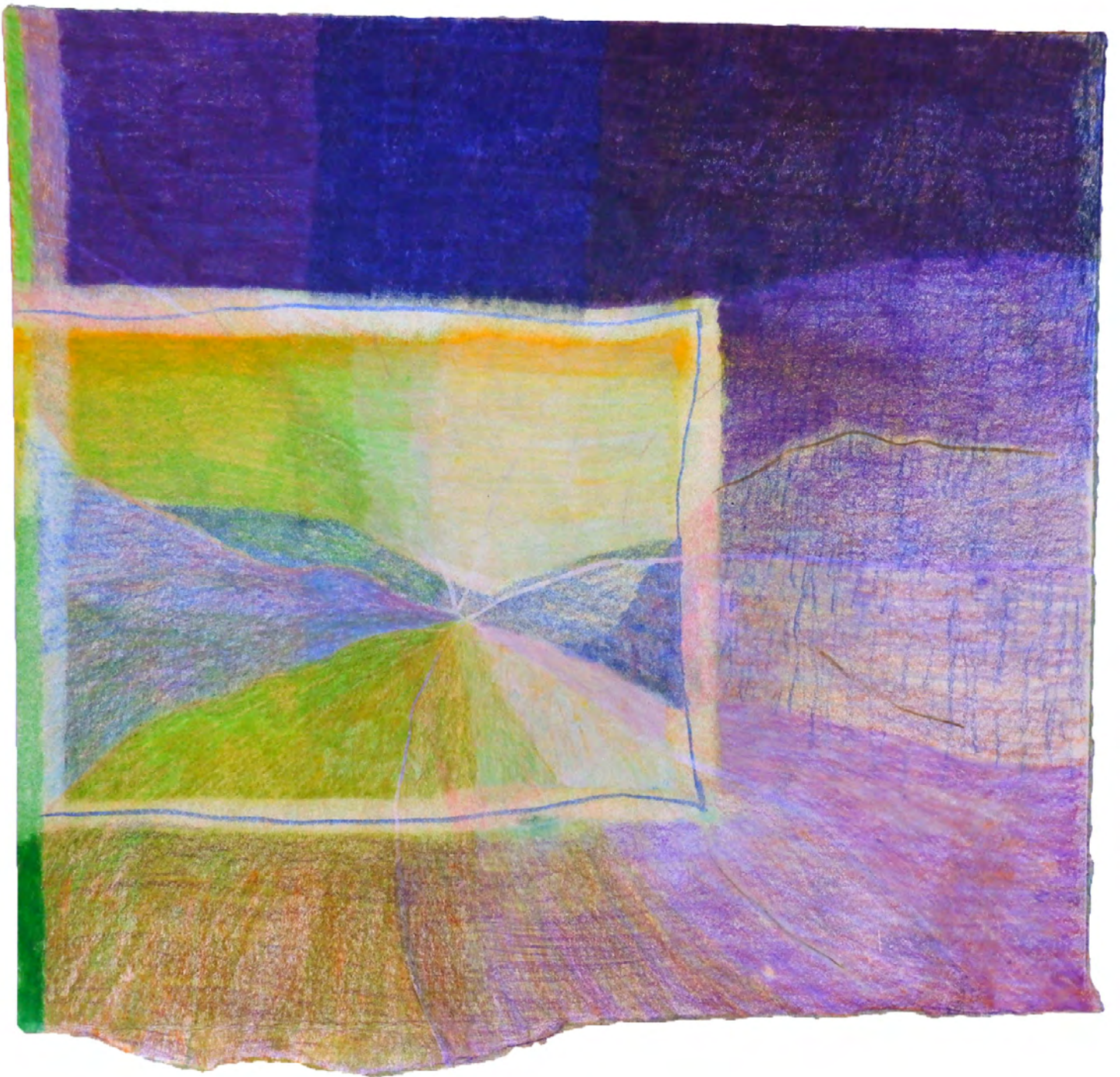


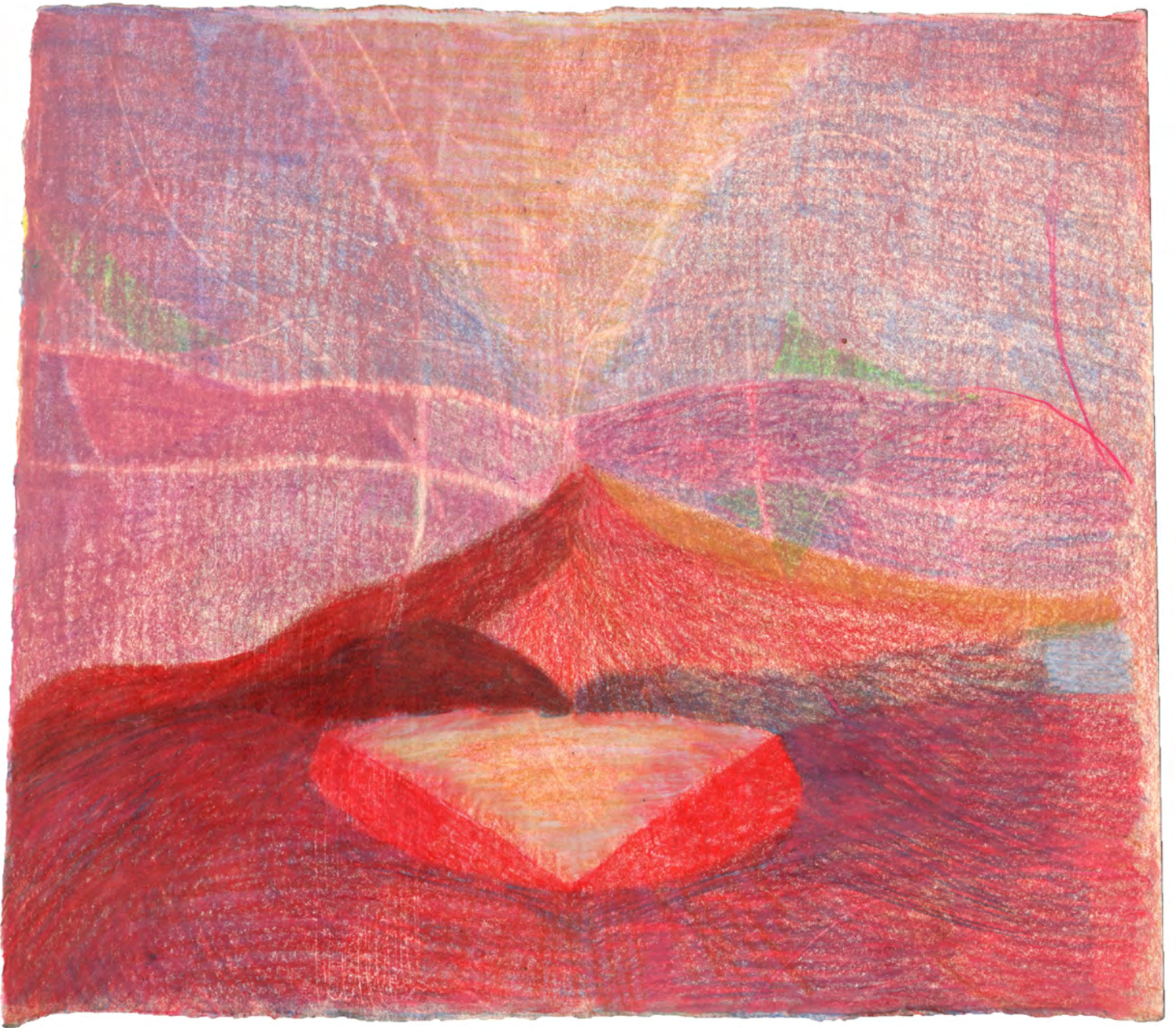












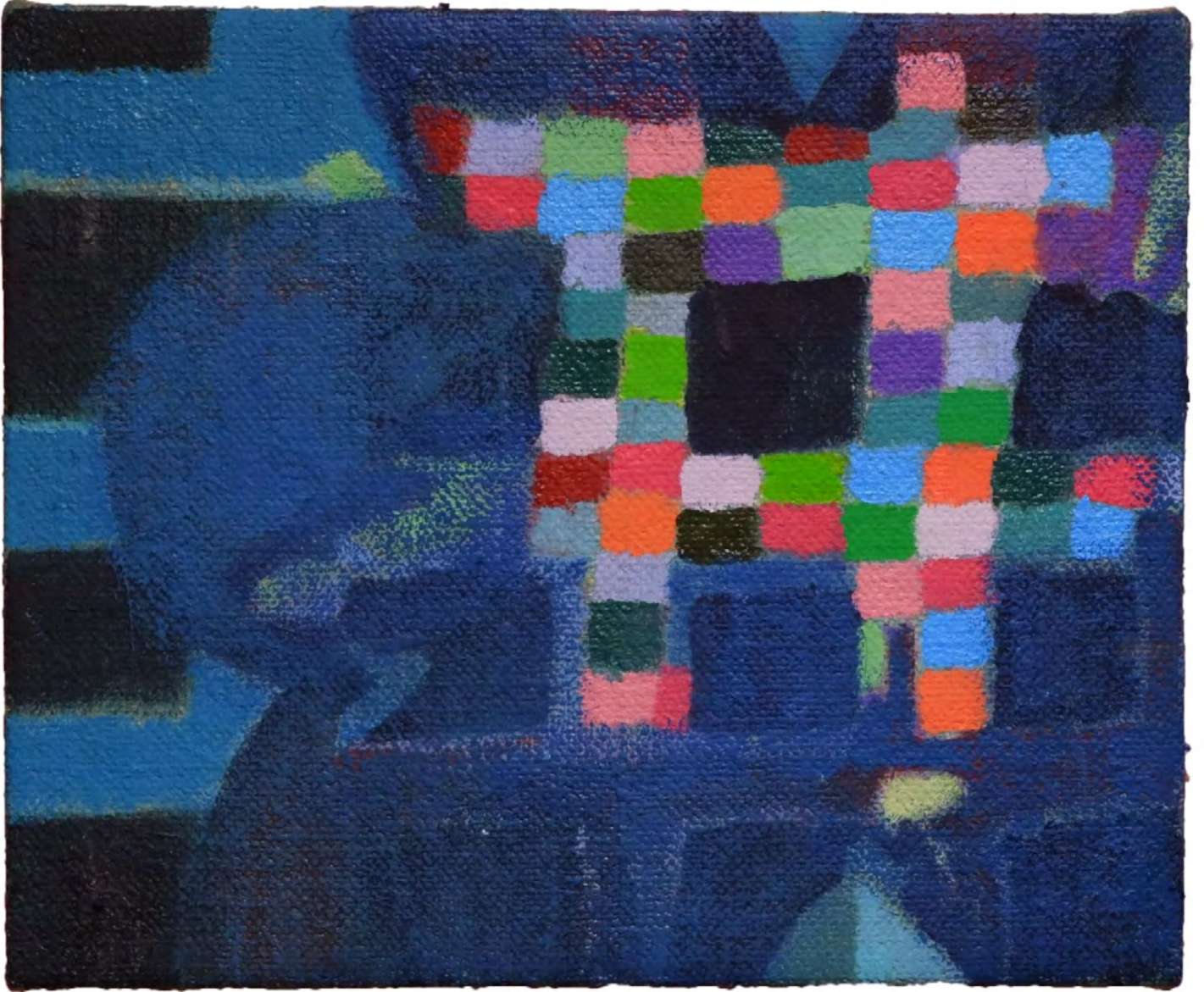






















'To sail away to an island on a stamp', Oil and thread on Hessian, 120 x 165cm | £3,800



If you would like to purchase  
any of the works by Orla Kane  
please contact the team  
[hello@blueshopcottage.com](mailto:hello@blueshopcottage.com)

**Blue Shop Gallery**

72 BRIXTON ROAD, OVAL